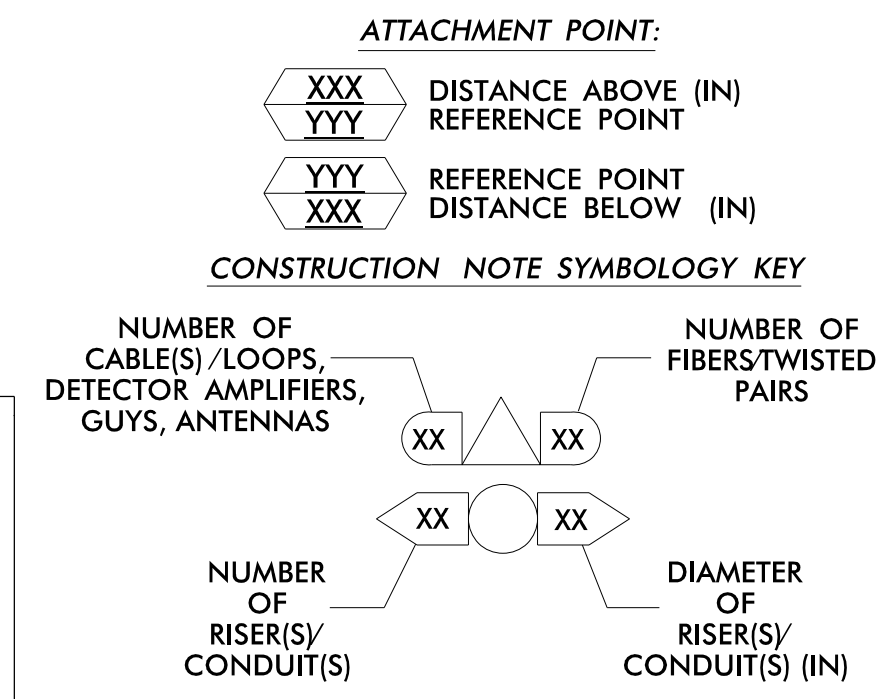


Areas within this project have been determined to contain properties with documented historical significance. If it is necessary to deviate from the plans in an area identified to contain properties with historic significance, alert the engineer to contact Environmental Analysis Unit – Historic Architecture Group of North Carolina Department of Transportation for an effects determination before proceeding.

- NOTES:**
- UNLESS OTHERWISE NOTED:
 - OVERLASH NEW FIBER OPTIC CABLE TO EXISTING COMMUNICATIONS CABLE.
 - ATTACH NEW MESSENGER CABLE 40" BELOW POWER.
 - ATTACH ON FRONT SIDE (FS) OF POLE.
 - SEAL ALL CONDUIT ENDS WITH DUCT AND CONDUIT SEALER AT ALL JUNCTION BOX / CABINET ENTRANCES.



1	INSTALL CATEGORY 6 CABLE	11	INSTALL RIGID, GALVANIZED STEEL RISER WITH WEATHERHEAD	22	INSTALL NEW CONDUIT INTO CABINET BASE (USE EX CABINET ENTRANCE WHEN AVAILABLE)	32	MODIFY EXISTING SPLICE ENCLOSURE OR INTERCONNECT CENTER	43	REMOVE EXISTING WOOD POLE	54	LASH CABLE(S) TO EXISTING SIGNAL/COMMUNICATIONS CABLE	66	BOND RISER TO POLE GROUND
2	INSTALL 3-WIRE COPPER SERVICE ENTRANCE CONDUCTORS	12	INSTALL RIGID, GALVANIZED STEEL RISER WITH HEAT SHRINK TUBING	23	INSTALL NEW RISER INTO CABINET BASE (USE EX CABINET ENTRANCE WHEN AVAILABLE)	33	REMOVE EXISTING SPLICE /HUB / CCTV CABINET	44	INSTALL AERIAL GUY ASSEMBLY	55	LASH CABLE(S) TO EXISTING MESSENGER CABLE	67	BOND TRACER WIRE TO EQUIPMENT GROUND BUS
3	INSTALL 3-WIRE COPPER FEEDER CONDUCTORS	13	INSTALL HEAT SHRINK TUBING RETROFIT KIT	24	INSTALL NEW CONDUIT INTO POLE MOUNTED CABINET	34	INSTALL CABINET FOUNDATION	45	INSTALL STANDARD GUY ASSEMBLY	56	LASH CABLE(S) TO NEW MESSENGER CABLE	68	NOT USED
4	INSTALL SMFO CABLE	14	INSTALL HIGH DENSITY POLYETHYLENE CONDUIT	25	INSTALL NEW RISER INTO POLE MOUNTED CABINET	35	REMOVE EXISTING CABINET FOUNDATION	46	INSTALL SIDEWALK GUY ASSEMBLY	57	MODIFY EXISTING ELECTRICAL SERVICE	69	HANDLASH AND INSTALL AERIAL CABLE PROTECTOR
5	INSTALL COAXIAL ANTENNA CABLE	15	DIRECTIONAL DRILL CONDUIT	26	INSTALL DIGITAL VIDEO ENCODER	36	INSTALL CCTV CAMERA ASSEMBLY	47	INSTALL MESSENGER CABLE	58	INSTALL NEW ELECTRICAL SERVICE	70	INSTALL EQUIPMENT CABINET DISCONNECT
6	INSTALL FIBER-OPTIC DROP CABLE	16	BORE AND JACK CONDUIT	27	INSTALL NEW ETHERNET EDGE SWITCH IN CABINET	37	INSTALL CCTV CAMERA WOOD POLE	48	REMOVE EXISTING COMMUNICATIONS CABLE AND MESSENGER CABLE	59	INSTALL NEW POLE MOUNTED CCTV CABINET (336)	71	INSTALL MANAGED ETHERNET SWITCH
7	INSTALL TRACER WIRE	17	INSTALL CABLE(S) IN EXISTING CONDUIT	28	INSTALL INTERCONNECT CENTER, PATCH PANEL, JUMPERS, AND FUSION SPLICE CABLE IN CABINET	38	INSTALL STANDARD SIZE JUNCTION BOX	49	REMOVE EXISTING COMMUNICATIONS CABLE	60	INSTALL NEW CCTV CABINET (NEMA TYPE 4)	72	INSTALL CCTV METAL POLE
8	INSTALL CONDUIT UNDERGROUND	18	INSTALL CABLE(S) IN NEW CONDUIT	29	INSTALL UNDERGROUND SPLICE ENCLOSURE	39	INSTALL SPECIAL-SIZED JUNCTION BOX (36" x 24" x 24")	50	INSTALL SERVICE CONDUCTORS	61	REMOVE EXISTING CCTV CAMERA ASSEMBLY	73	REMOVE EXISTING CCTV METAL POLE
9	INSTALL PVC CONDUIT	19	INSTALL CABLE(S) IN EXISTING RISER(S)	30	INSTALL AERIAL SPLICE ENCLOSURE	40	INSTALL OVER-SIZED JUNCTION BOX	51	INSTALL CABLE STORAGE GUIDE(S) (SNOW SHOE(S) AND STORE 100 FEET OF EACH CABLE)	62	NEW CABINET ENTRANCE INTO NEW FOUNDATION	74	REMOVE WIRELESS COMMUNICATIONS EQUIPMENT
10	INSTALL RIGID, GALVANIZED STEEL CONDUIT	20	INSTALL CABLE(S) IN NEW RISER(S)	31	INSTALL TYPE 332 HUB CABINET	41	REMOVE EXISTING JUNCTION BOX	52A	INSTALL DELINEATOR MARKER	63	DRILL/CORE DRILL EXISTING FOUNDATION	75	BACKPULL AND COIL NCDOT ITS CABLE
						42	INSTALL WOOD POLE	52B	INSTALL JUNCTION BOX MARKER	64	INTERCEPT AND REROUTE EXISTING CONDUITS	76	INSTALL HUB SWITCH
								53	STORE 30' OF COMMUNICATIONS CABLE (EACH CABLE)	65	BOND MESSENGER TO POLE GROUND	77	INSTALL CELLULAR MODEM

ATKINS 1616 EAST MILLBROOK ROAD, SUITE 160 RALEIGH, NORTH CAROLINA 27609 (919) 876-8888 NCBES #F-0326

DOCUMENT NOT CONSIDERED FINAL UNLESS ALL SIGNATURES COMPLETED

Prepared for the Offices of:

Fuquay-Varina Signal System Cable Routing Plans

Division 5 Wake County Fuquay-Varina

PLAN DATE: June 2022 REVIEWED BY: MB Toth

PREPARED BY: JT Stiff REVIEWED BY: AM Encarnacion

REVISIONS INIT. DATE

SCALE 0 50 1"=50'

Seal: 4/14/2023

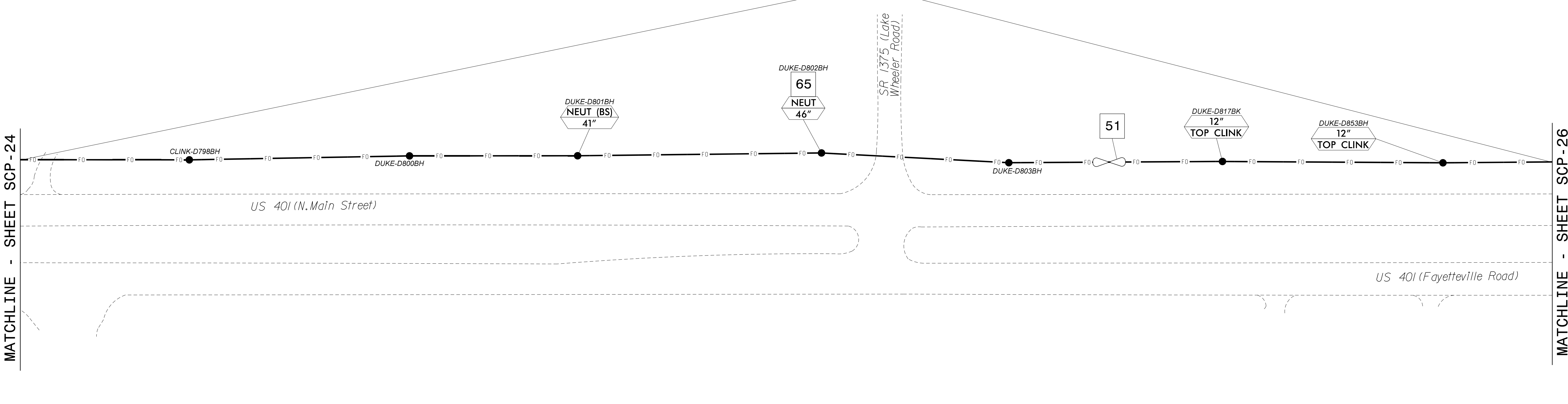
CADD File name: CL-18.dgn

16-MB-2023-16152 //S:\ED00036353\ortho\is-com\A\K\N\01\Documents\Roads and Bridges\Projects\100063268 Fuquay Varina\Task 11_CL\CL-18.dgn STIF1685 AT LUS01089

1 4 48
47 56

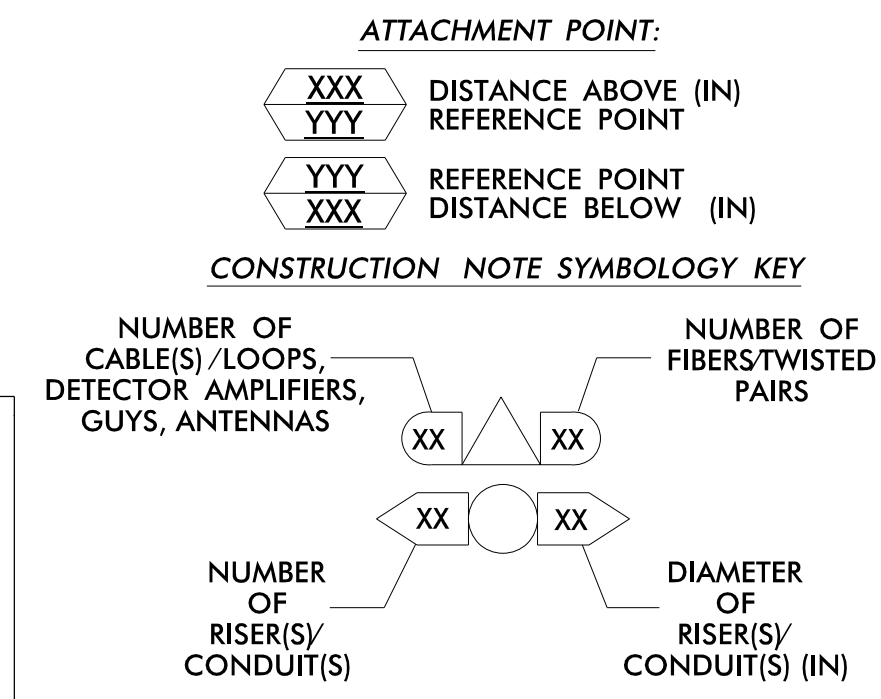
MATCHLINE - SHEET SCP-24

MATCHLINE - SHEET SCP-26



NOTES:

- 1. UNLESS OTHERWISE NOTED:
 - OVERLASH NEW FIBER OPTIC CABLE TO EXISTING COMMUNICATIONS CABLE.
 - ATTACH NEW MESSENGER CABLE 40" BELOW POWER.
 - ATTACH ON FRONT SIDE (FS) OF POLE.
- 2. SEAL ALL CONDUIT ENDS WITH DUCT AND CONDUIT SEALER AT ALL JUNCTION BOX / CABINET ENTRANCES.



1	INSTALL CATEGORY 6 CABLE	11	INSTALL RIGID, GALVANIZED STEEL RISER WITH WEATHERHEAD	22	INSTALL NEW CONDUIT INTO CABINET BASE (USE EX CABINET ENTRANCE WHEN AVAILABLE)	32	MODIFY EXISTING SPLICE ENCLOSURE OR INTERCONNECT CENTER	43	REMOVE EXISTING WOOD POLE	54	LASH CABLE(S) TO EXISTING SIGNAL/COMMUNICATIONS CABLE	66	BOND RISER TO POLE GROUND
2	INSTALL 3-WIRE COPPER SERVICE ENTRANCE CONDUCTORS	12	INSTALL RIGID, GALVANIZED STEEL RISER WITH HEAT SHRINK TUBING	23	INSTALL NEW RISER INTO CABINET BASE (USE EX CABINET ENTRANCE WHEN AVAILABLE)	33	REMOVE EXISTING SPLICE /HUB / CCTV CABINET	44	INSTALL AERIAL GUY ASSEMBLY	55	LASH CABLE(S) TO EXISTING MESSENGER CABLE	67	BOND TRACER WIRE TO EQUIPMENT GROUND BUS
3	INSTALL 3-WIRE COPPER FEEDER CONDUCTORS	13	INSTALL HEAT SHRINK TUBING RETROFIT KIT	24	INSTALL NEW CONDUIT INTO POLE MOUNTED CABINET	34	INSTALL CABINET FOUNDATION	45	INSTALL STANDARD GUY ASSEMBLY	56	LASH CABLE(S) TO NEW MESSENGER CABLE	68	NOT USED
4	INSTALL SMFO CABLE	14	INSTALL HIGH DENSITY POLYETHYLENE CONDUIT	25	INSTALL NEW RISER INTO POLE MOUNTED CABINET	35	REMOVE EXISTING CABINET FOUNDATION	46	INSTALL SIDEWALK GUY ASSEMBLY	57	MODIFY EXISTING ELECTRICAL SERVICE	69	HANDLASH AND INSTALL AERIAL CABLE PROTECTOR
5	INSTALL COAXIAL ANTENNA CABLE	15	DIRECTIONAL DRILL CONDUIT	26	INSTALL DIGITAL VIDEO ENCODER	36	INSTALL CCTV CAMERA ASSEMBLY	47	INSTALL MESSENGER CABLE	58	INSTALL NEW ELECTRICAL SERVICE	70	INSTALL EQUIPMENT CABINET DISCONNECT
6	INSTALL FIBER-OPTIC DROP CABLE	16	BORE AND JACK CONDUIT	27	INSTALL NEW ETHERNET EDGE SWITCH IN CABINET	37	INSTALL CCTV CAMERA WOOD POLE	48	REMOVE EXISTING COMMUNICATIONS CABLE AND MESSENGER CABLE	59	INSTALL NEW POLE MOUNTED CCTV CABINET (336)	71	INSTALL MANAGED ETHERNET SWITCH
7	INSTALL TRACER WIRE	17	INSTALL CABLE(S) IN EXISTING CONDUIT	28	INSTALL INTERCONNECT CENTER, PATCH PANEL, JUMPERS, AND FUSION SPLICE CABLE IN CABINET	38	INSTALL STANDARD SIZE JUNCTION BOX	49	REMOVE EXISTING COMMUNICATIONS CABLE	60	INSTALL NEW CCTV CABINET (NEMA TYPE 4)	72	INSTALL CCTV METAL POLE
8	INSTALL CONDUIT UNDERGROUND	18	INSTALL CABLE(S) IN NEW CONDUIT	29	INSTALL UNDERGROUND SPLICE ENCLOSURE	39	INSTALL SPECIAL-SIZED JUNCTION BOX (36" x 24" x 24")	50	INSTALL SERVICE CONDUCTORS	61	REMOVE EXISTING CCTV CAMERA ASSEMBLY	73	REMOVE EXISTING CCTV METAL POLE
9	INSTALL PVC CONDUIT	19	INSTALL CABLE(S) IN EXISTING RISER(S)	30	INSTALL AERIAL SPLICE ENCLOSURE	40	INSTALL OVER-SIZED JUNCTION BOX	51	INSTALL CABLE STORAGE GUIDE(S) (SNOW SHOE(S) AND STORE 100 FEET OF EACH CABLE	62	NEW CABINET ENTRANCE INTO NEW FOUNDATION	74	REMOVE WIRELESS COMMUNICATIONS EQUIPMENT
10	INSTALL RIGID, GALVANIZED STEEL CONDUIT	20	INSTALL CABLE(S) IN NEW RISER(S)	31	INSTALL TYPE 332 HUB CABINET	41	REMOVE EXISTING JUNCTION BOX	52A	INSTALL DELINEATOR MARKER	63	DRILL/CORE DRILL EXISTING FOUNDATION	75	BACKPULL AND COIL NCDOT ITS CABLE
						42	INSTALL WOOD POLE	52B	INSTALL JUNCTION BOX MARKER	64	INTERCEPT AND REROUTE EXISTING CONDUITS	76	INSTALL HUB SWITCH
								53	STORE 30' OF COMMUNICATIONS CABLE (EACH CABLE)	65	BOND MESSENGER TO POLE GROUND	77	INSTALL CELLULAR MODEM

ATKINS 1616 EAST MILLBROOK ROAD, SUITE 160 RALEIGH, NORTH CAROLINA 27609 (919) 876-8888 NGBEES #F-0326

Prepared for the Offices of:

DOCUMENT NOT CONSIDERED FINAL UNLESS ALL SIGNATURES COMPLETED

Fuquay-Varina Signal System Cable Routing Plans

Division 5 Wake County Fuquay-Varina

PLAN DATE: June 2022 REVIEWED BY: MB Toth

PREPARED BY: JT Stiff REVIEWED BY: AM Encarnacion

REVISIONS: _____ INIT. DATE

SCALE: 1"=50'

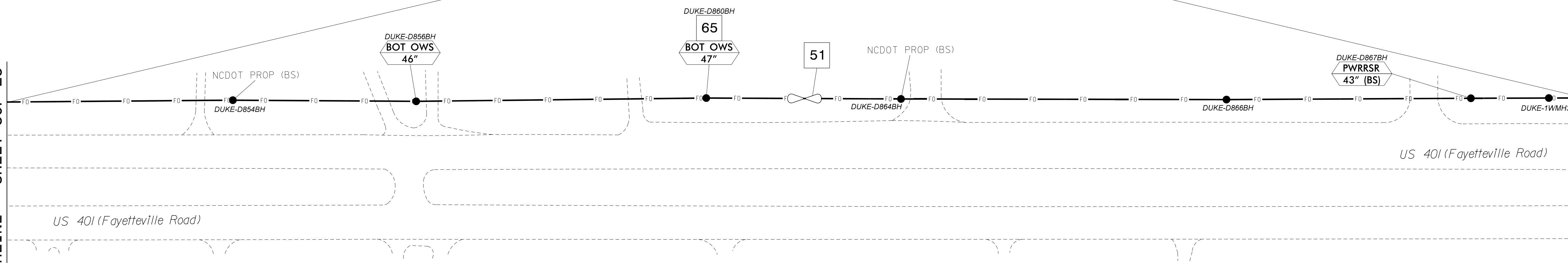
CADD File name: CL-20.dgn

16-MB-2023-16152
S:\Projects\2023\061523\061523-001\Documents\Roads and Bridges\Projects\100063268 Fuquay Varina\Task 11_CL/CL-20.dgn
S:\Projects\2023\061523\061523-001\Documents\Roads and Bridges\Projects\100063268 Fuquay Varina\Task 11_CL/CL-20.dgn

1 4 48
47 56

MATCHLINE - SHEET SCP-25

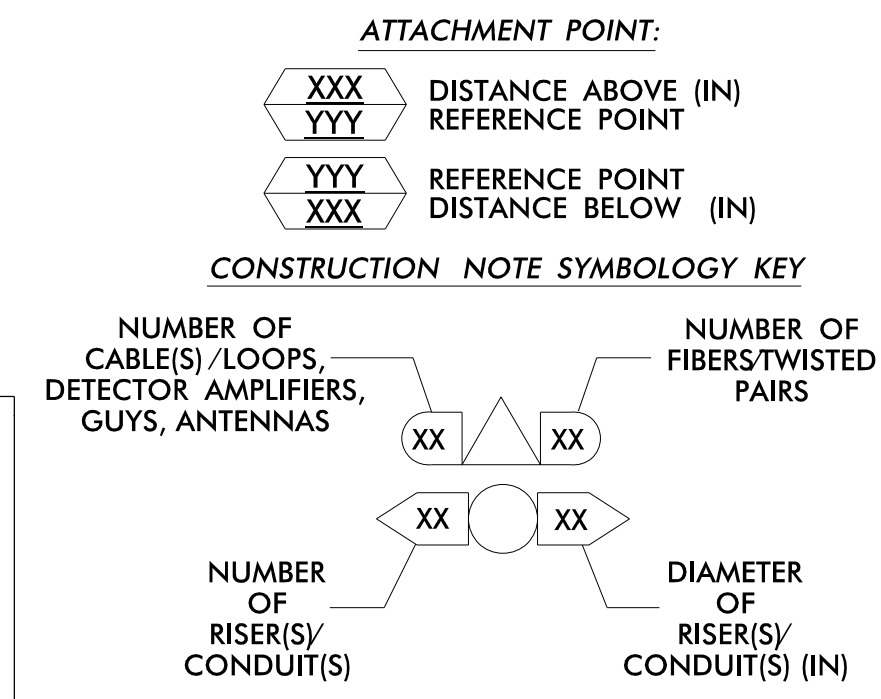
MATCHLINE - SHEET SCP-27



NOTES:

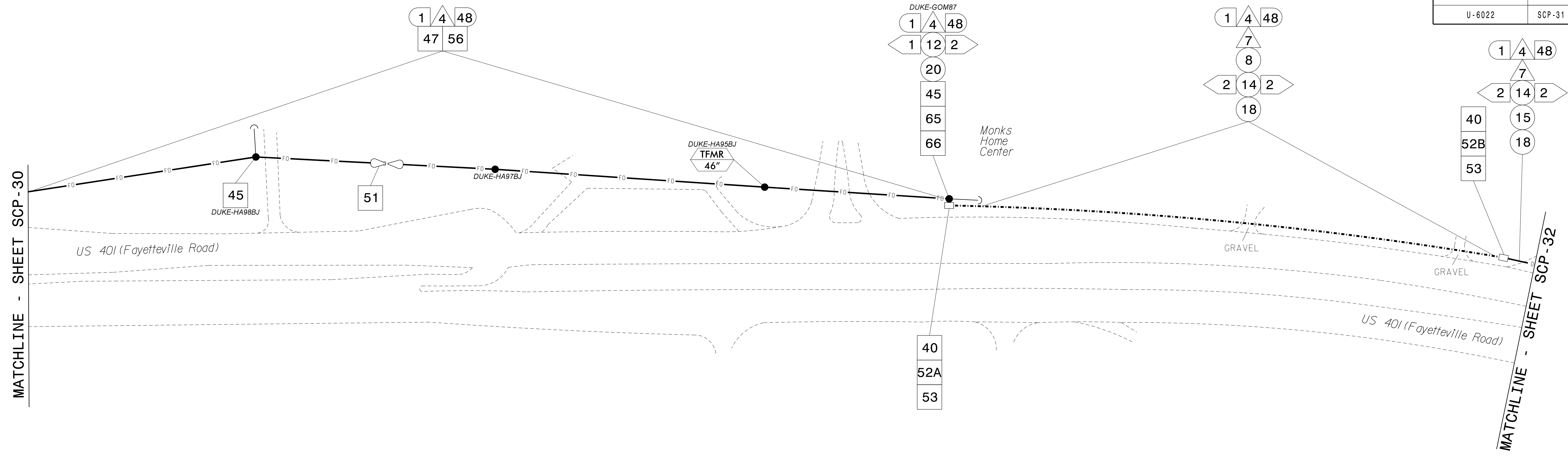
- 1. UNLESS OTHERWISE NOTED:
- OVERLASH NEW FIBER OPTIC CABLE TO EXISTING COMMUNICATIONS CABLE.
- ATTACH NEW MESSENGER CABLE 40" BELOW POWER.
- ATTACH ON FRONT SIDE (FS) OF POLE.
2. SEAL ALL CONDUIT ENDS WITH DUCT AND CONDUIT SEALER AT ALL JUNCTION BOX / CABINET ENTRANCES.

Table with 10 columns of callout numbers (1-77) and their corresponding descriptions for cable installation, equipment, and conduit work.



Project information block including the ATKINS logo, address (1616 East Millbrook Road), project name (Fuquay-Varina Signal System Cable Routing Plans), dates, and a professional seal for Anthony Encarnacion.

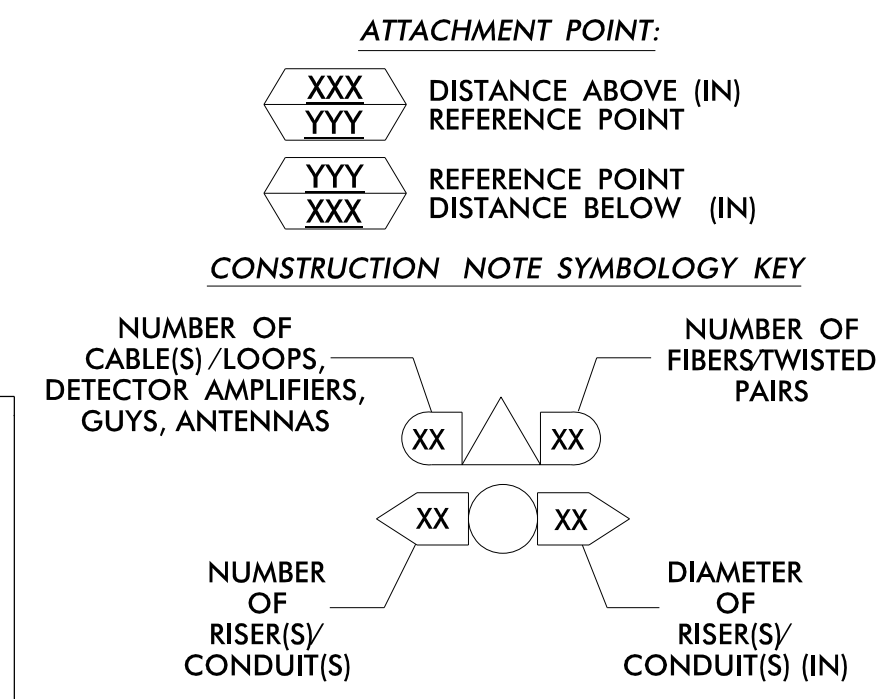
16-MB-2023-16152
C:\Users\jstiff\OneDrive\Documents\Roads and Bridges\Projects\100063268_Fuquay_Varina\Task 11_CL/CL-21.dgn



MATCHLINE - SHEET SCP-30

MATCHLINE - SHEET SCP-32

- NOTES:**
- UNLESS OTHERWISE NOTED:
 - OVERLASH NEW FIBER OPTIC CABLE TO EXISTING COMMUNICATIONS CABLE.
 - ATTACH NEW MESSENGER CABLE 40" BELOW POWER.
 - ATTACH ON FRONT SIDE (FS) OF POLE.
 - SEAL ALL CONDUIT ENDS WITH DUCT AND CONDUIT SEALER AT ALL JUNCTION BOX / CABINET ENTRANCES.



1	INSTALL CATEGORY 6 CABLE	11	INSTALL RIGID, GALVANIZED STEEL RISER WITH WEATHERHEAD	22	INSTALL NEW CONDUIT INTO CABINET BASE (USE EX CABINET ENTRANCE WHEN AVAILABLE)	32	MODIFY EXISTING SPLICE ENCLOSURE OR INTERCONNECT CENTER	43	REMOVE EXISTING WOOD POLE	54	LASH CABLE(S) TO EXISTING SIGNAL/COMMUNICATIONS CABLE	66	BOND RISER TO POLE GROUND
2	INSTALL 3-WIRE COPPER SERVICE ENTRANCE CONDUCTORS	12	INSTALL RIGID, GALVANIZED STEEL RISER WITH HEAT SHRINK TUBING	23	INSTALL NEW RISER INTO CABINET BASE (USE EX CABINET ENTRANCE WHEN AVAILABLE)	33	REMOVE EXISTING SPLICE / HUB / CCTV CABINET	44	INSTALL AERIAL GUY ASSEMBLY	55	LASH CABLE(S) TO EXISTING MESSENGER CABLE	67	BOND TRACER WIRE TO EQUIPMENT GROUND BUS
3	INSTALL 3-WIRE COPPER FEEDER CONDUCTORS	13	INSTALL HEAT SHRINK TUBING RETROFIT KIT	24	INSTALL NEW CONDUIT INTO POLE MOUNTED CABINET	34	INSTALL CABINET FOUNDATION	45	INSTALL STANDARD GUY ASSEMBLY	56	LASH CABLE(S) TO NEW MESSENGER CABLE	68	NOT USED
4	INSTALL SMFO CABLE	14	INSTALL HIGH DENSITY POLYETHYLENE CONDUIT	25	INSTALL NEW RISER INTO POLE MOUNTED CABINET	35	REMOVE EXISTING CABINET FOUNDATION	46	INSTALL SIDEWALK GUY ASSEMBLY	57	MODIFY EXISTING ELECTRICAL SERVICE	69	HANDLASH AND INSTALL AERIAL CABLE PROTECTOR
5	INSTALL COAXIAL ANTENNA CABLE	15	DIRECTIONAL DRILL CONDUIT	26	INSTALL DIGITAL VIDEO ENCODER	36	INSTALL CCTV CAMERA ASSEMBLY	47	INSTALL MESSENGER CABLE	58	INSTALL NEW ELECTRICAL SERVICE	70	INSTALL EQUIPMENT CABINET DISCONNECT
6	INSTALL FIBER-OPTIC DROP CABLE	16	BORE AND JACK CONDUIT	27	INSTALL NEW ETHERNET EDGE SWITCH IN CABINET	37	INSTALL CCTV CAMERA WOOD POLE	48	REMOVE EXISTING COMMUNICATIONS CABLE AND MESSENGER CABLE	59	INSTALL NEW POLE MOUNTED CCTV CABINET (336)	71	INSTALL MANAGED ETHERNET SWITCH
7	INSTALL TRACER WIRE	17	INSTALL CABLE(S) IN EXISTING CONDUIT	28	INSTALL INTERCONNECT CENTER, PATCH PANEL, JUMPERS, AND FUSION SPLICE CABLE IN CABINET	38	INSTALL STANDARD SIZE JUNCTION BOX	49	REMOVE EXISTING COMMUNICATIONS CABLE	60	INSTALL NEW CCTV CABINET (NEMA TYPE 4)	72	INSTALL CCTV METAL POLE
8	INSTALL CONDUIT UNDERGROUND	18	INSTALL CABLE(S) IN NEW CONDUIT	29	INSTALL UNDERGROUND SPLICE ENCLOSURE	39	INSTALL SPECIAL-SIZED JUNCTION BOX (36" x 24" x 24")	50	INSTALL SERVICE CONDUCTORS	61	REMOVE EXISTING CCTV CAMERA ASSEMBLY	73	REMOVE EXISTING CCTV METAL POLE
9	INSTALL PVC CONDUIT	19	INSTALL CABLE(S) IN EXISTING RISER(S)	30	INSTALL AERIAL SPLICE ENCLOSURE	40	INSTALL OVER-SIZED JUNCTION BOX	51	INSTALL CABLE STORAGE GUIDE(S) [SNOW SHOE(S)] AND STORE 100 FEET OF EACH CABLE	62	NEW CABINET ENTRANCE INTO NEW FOUNDATION	74	REMOVE WIRELESS COMMUNICATIONS EQUIPMENT
10	INSTALL RIGID, GALVANIZED STEEL CONDUIT	20	INSTALL CABLE(S) IN NEW RISER(S)	31	INSTALL TYPE 332 HUB CABINET	41	REMOVE EXISTING JUNCTION BOX	52A	INSTALL DELINEATOR MARKER	63	DRILL/CORE DRILL EXISTING FOUNDATION	75	BACKPULL AND COIL NCDOT ITS CABLE
						42	INSTALL WOOD POLE	52B	INSTALL JUNCTION BOX MARKER	64	INTERCEPT AND REROUTE EXISTING CONDUITS	76	INSTALL HUB SWITCH
								53	STORE 30' OF COMMUNICATIONS CABLE (EACH CABLE)	65	BOND MESSENGER TO POLE GROUND	77	INSTALL CELLULAR MODEM

ATKINS 1616 EAST MILLBROOK ROAD, SUITE 160 RALEIGH, NORTH CAROLINA 27609 (919) 876-8888 NCBES #F-0326

DOCUMENT NOT CONSIDERED FINAL UNLESS ALL SIGNATURES COMPLETED

Prepared for the Offices of:

Fuquay-Varina Signal System Cable Routing Plans

Division 5 Wake County Fuquay-Varina

PLAN DATE: June 2022 REVIEWED BY: MB Toth

PREPARED BY: JT Stiff REVIEWED BY: AM Encarnacion

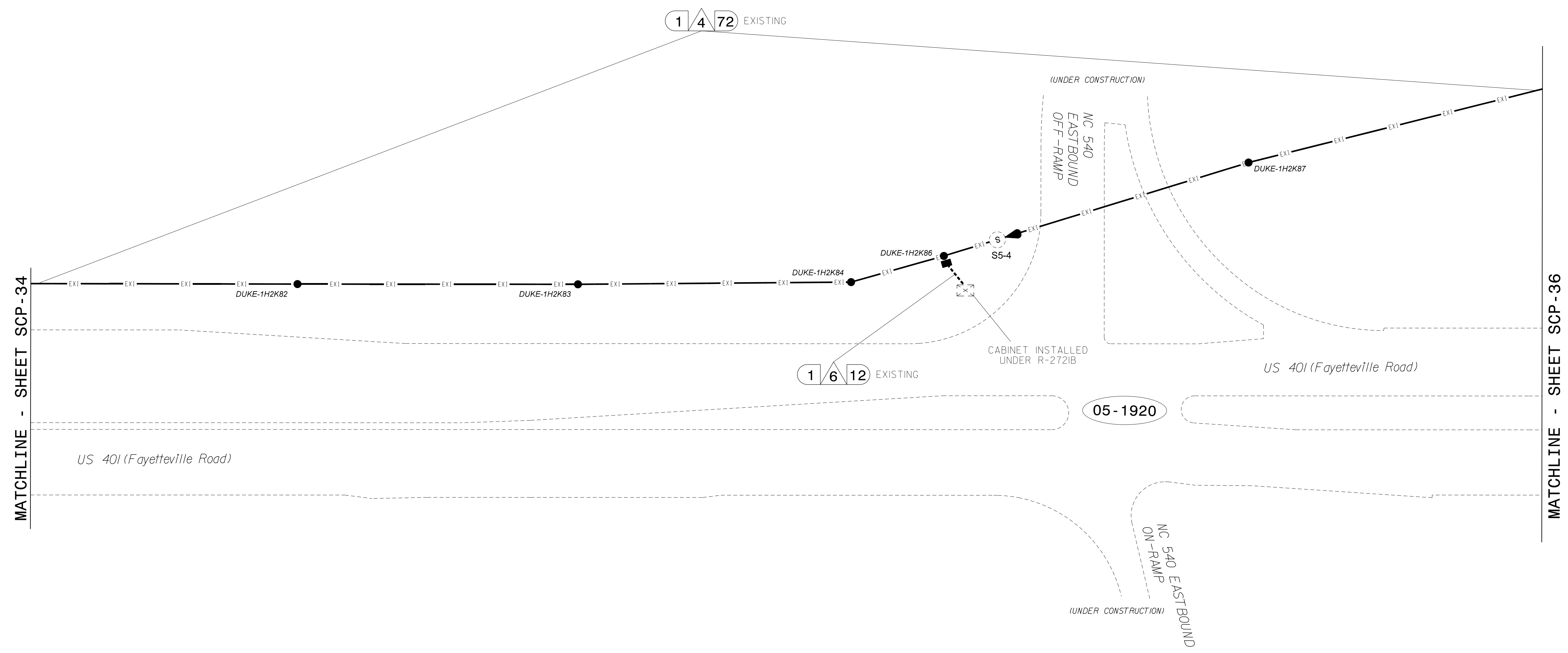
REVISIONS: INIT. DATE

SCALE: 0 50
1"=50'

Seal: DATE: 4/14/2023

CADD File Name: CL-26.dgn

16-MB-2023-16-53
S:\Projects\2023\16-53\Drawings\Roads and Bridges\Projects\100063268_Fuquay_Var\nc\Task_11_CL\CL-26.dgn
DATE: 4/14/2023



- NOTES:**
- UNLESS OTHERWISE NOTED:
 - OVERLASH NEW FIBER OPTIC CABLE TO EXISTING COMMUNICATIONS CABLE.
 - ATTACH NEW MESSENGER CABLE 40" BELOW POWER.
 - ATTACH ON FRONT SIDE (FS) OF POLE.
 - SEAL ALL CONDUIT ENDS WITH DUCT AND CONDUIT SEALER AT ALL JUNCTION BOX / CABINET ENTRANCES.

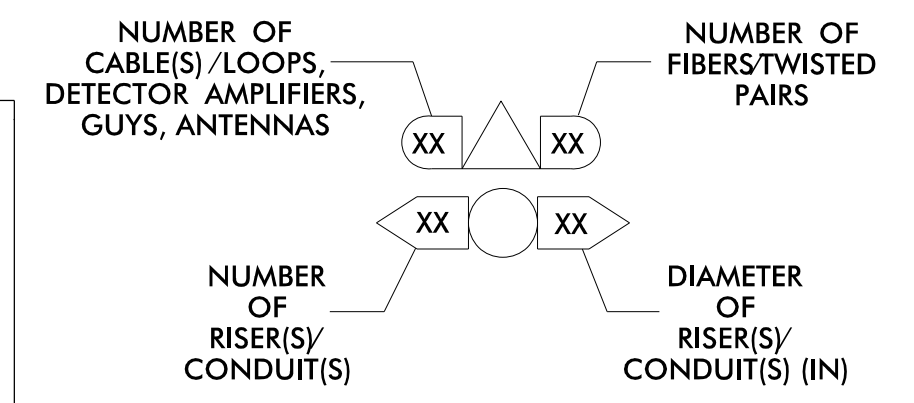
R-272B CURRENTLY UNDER CONSTRUCTION. THIS PLAN SHOWS INFORMATION FROM R-272B PLANS.

ATTACHMENT POINT:

XXX DISTANCE ABOVE (IN) REFERENCE POINT

YYY REFERENCE POINT DISTANCE BELOW (IN)

CONSTRUCTION NOTE SYMBOLOLOGY KEY



ATKINS 1616 EAST MILLBROOK ROAD, SUITE 160
RALEIGH, NORTH CAROLINA 27609
(919) 876-8888 NCBES #F-0326

DOCUMENT NOT CONSIDERED FINAL UNLESS ALL SIGNATURES COMPLETED

1 INSTALL CATEGORY 6 CABLE	11 INSTALL RIGID, GALVANIZED STEEL RISER WITH WEATHERHEAD	22 INSTALL NEW CONDUIT INTO CABINET BASE (USE EX CABINET ENTRANCE WHEN AVAILABLE)	32 MODIFY EXISTING SPLICE ENCLOSURE OR INTERCONNECT CENTER	43 REMOVE EXISTING WOOD POLE	54 LASH CABLE(S) TO EXISTING SIGNAL/COMMUNICATIONS CABLE	66 BOND RISER TO POLE GROUND
2 INSTALL 3-WIRE COPPER SERVICE ENTRANCE CONDUCTORS	12 INSTALL RIGID, GALVANIZED STEEL RISER WITH HEAT SHRINK TUBING	23 INSTALL NEW RISER INTO CABINET BASE (USE EX CABINET ENTRANCE WHEN AVAILABLE)	33 REMOVE EXISTING SPLICE / HUB / CCTV CABINET	44 INSTALL AERIAL GUY ASSEMBLY	55 LASH CABLE(S) TO EXISTING MESSENGER CABLE	67 BOND TRACER WIRE TO EQUIPMENT GROUND BUS
3 INSTALL 3-WIRE COPPER FEEDER CONDUCTORS	13 INSTALL HEAT SHRINK TUBING RETROFIT KIT	24 INSTALL NEW CONDUIT INTO POLE MOUNTED CABINET	34 INSTALL CABINET FOUNDATION	45 INSTALL STANDARD GUY ASSEMBLY	56 LASH CABLE(S) TO NEW MESSENGER CABLE	68 NOT USED
4 INSTALL SMFO CABLE	14 INSTALL HIGH DENSITY POLYETHYLENE CONDUIT	25 INSTALL NEW RISER INTO POLE MOUNTED CABINET	35 REMOVE EXISTING CABINET FOUNDATION	46 INSTALL SIDEWALK GUY ASSEMBLY	57 MODIFY EXISTING ELECTRICAL SERVICE	69 HANDLASH AND INSTALL AERIAL CABLE PROTECTOR
5 INSTALL COAXIAL ANTENNA CABLE	15 DIRECTIONAL DRILL CONDUIT	26 INSTALL DIGITAL VIDEO ENCODER	36 INSTALL CCTV CAMERA ASSEMBLY	47 INSTALL MESSENGER CABLE	58 INSTALL NEW ELECTRICAL SERVICE	70 INSTALL EQUIPMENT CABINET DISCONNECT
6 INSTALL FIBER-OPTIC DROP CABLE	16 BORE AND JACK CONDUIT	27 INSTALL NEW ETHERNET EDGE SWITCH IN CABINET	37 INSTALL CCTV CAMERA WOOD POLE	48 REMOVE EXISTING COMMUNICATIONS CABLE AND MESSENGER CABLE	59 INSTALL NEW POLE MOUNTED CCTV CABINET (336)	71 INSTALL MANAGED ETHERNET SWITCH
7 INSTALL TRACER WIRE	17 INSTALL CABLE(S) IN EXISTING CONDUIT	28 INSTALL INTERCONNECT CENTER, PATCH PANEL, JUMPERS, AND FUSION SPLICE CABLE IN CABINET	38 INSTALL STANDARD SIZE JUNCTION BOX	49 REMOVE EXISTING COMMUNICATIONS CABLE	60 INSTALL NEW CCTV CABINET (NEMA TYPE 4)	72 INSTALL CCTV METAL POLE
8 INSTALL CONDUIT UNDERGROUND	18 INSTALL CABLE(S) IN NEW CONDUIT	29 INSTALL UNDERGROUND SPLICE ENCLOSURE	39 INSTALL SPECIAL-SIZED JUNCTION BOX (36" x 24" x 24")	50 INSTALL SERVICE CONDUCTORS	61 REMOVE EXISTING CCTV CAMERA ASSEMBLY	73 REMOVE EXISTING CCTV METAL POLE
9 INSTALL PVC CONDUIT	19 INSTALL CABLE(S) IN EXISTING RISER(S)	30 INSTALL AERIAL SPLICE ENCLOSURE	40 INSTALL OVER-SIZED JUNCTION BOX	51 INSTALL CABLE STORAGE GUIDE(S) [SNOW SHOE(S)] AND STORE 100 FEET OF EACH CABLE	62 NEW CABINET ENTRANCE INTO NEW FOUNDATION	74 REMOVE WIRELESS COMMUNICATIONS EQUIPMENT
10 INSTALL RIGID, GALVANIZED STEEL CONDUIT	20 INSTALL CABLE(S) IN NEW RISER(S)	31 INSTALL TYPE 332 HUB CABINET	41 REMOVE EXISTING JUNCTION BOX	52A INSTALL DELINEATOR MARKER	63 DRILL/CORE DRILL EXISTING FOUNDATION	75 BACKPULL AND COIL NCDOT ITS CABLE
			42 INSTALL WOOD POLE	52B INSTALL JUNCTION BOX MARKER	64 INTERCEPT AND REROUTE EXISTING CONDUITS	76 INSTALL HUB SWITCH
				53 STORE 30' OF COMMUNICATIONS CABLE (EACH CABLE)	65 BOND MESSENGER TO POLE GROUND	77 INSTALL CELLULAR MODEM

Prepared for the Offices of:

Fuquay-Varina Signal System Cable Routing Plans

Division 5 Wake County Fuquay-Varina

PLAN DATE: June 2022 REVIEWED BY: MB Toth

PREPARED BY: JT Stiff REVIEWED BY: AM Encarnacion

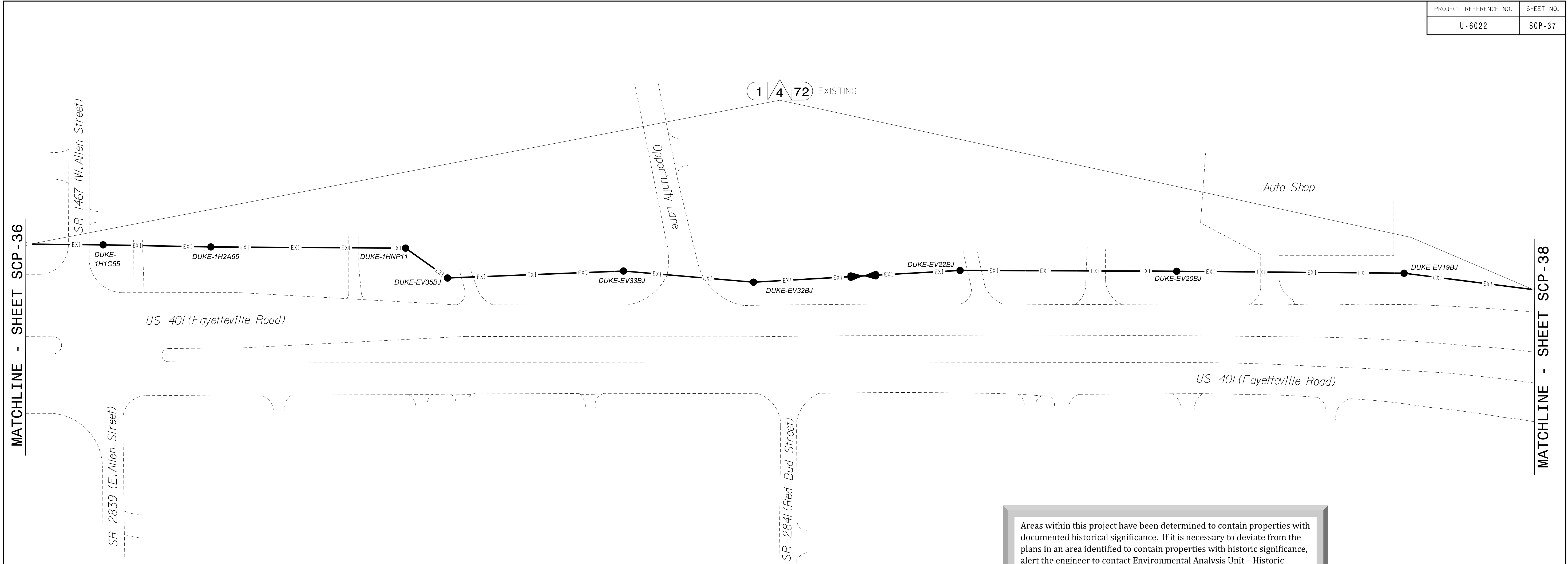
REVISIONS: INIT. DATE

SCALE: 0 50 1"=50'

4/14/2023

CADD File name: CL=30.dgn

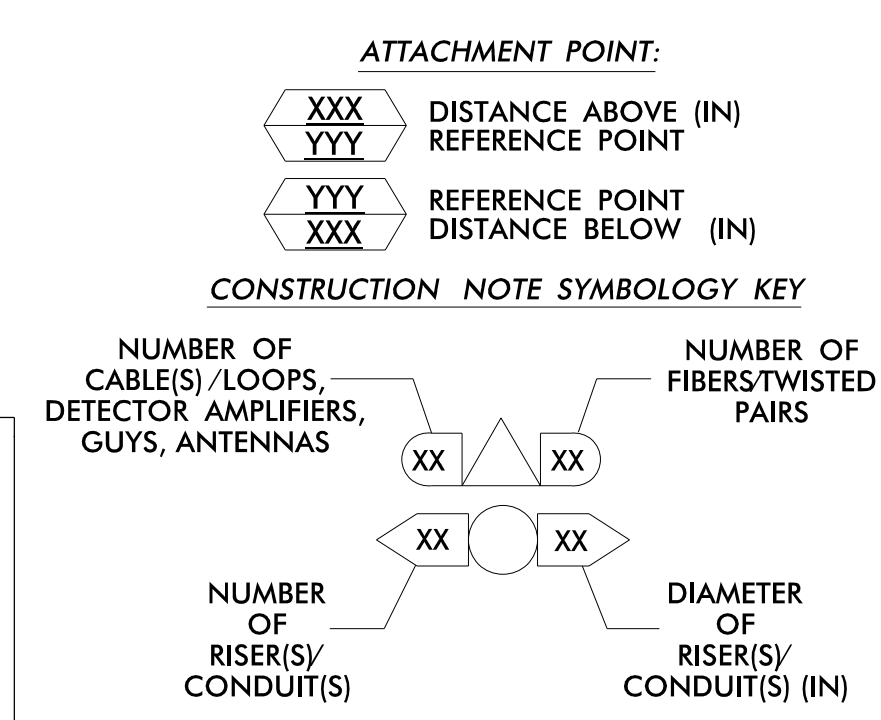
16-MAR-2023 16:54 \\FSJ\ED036363\proj\100063268_Fuquay_Var\nc\Task 11_CL\CL-30.dgn



Areas within this project have been determined to contain properties with documented historical significance. If it is necessary to deviate from the plans in an area identified to contain properties with historic significance, alert the engineer to contact [Environmental Analysis Unit - Historic Architecture Group of North Carolina Department of Transportation](#) for an effects determination before proceeding.

- NOTES:**
- UNLESS OTHERWISE NOTED:
 - OVERLASH NEW FIBER OPTIC CABLE TO EXISTING COMMUNICATIONS CABLE.
 - ATTACH NEW MESSENGER CABLE 40" BELOW POWER.
 - ATTACH ON FRONT SIDE (FS) OF POLE.
 - SEAL ALL CONDUIT ENDS WITH DUCT AND CONDUIT SEALER AT ALL JUNCTION BOX / CABINET ENTRANCES.

1	INSTALL CATEGORY 6 CABLE	11	INSTALL RIGID, GALVANIZED STEEL RISER WITH WEATHERHEAD	22	INSTALL NEW CONDUIT INTO CABINET BASE (USE EX CABINET ENTRANCE WHEN AVAILABLE)	32	MODIFY EXISTING SPLICE ENCLOSURE OR INTERCONNECT CENTER	43	REMOVE EXISTING WOOD POLE	54	LASH CABLE(S) TO EXISTING SIGNAL/COMMUNICATIONS CABLE	66	BOND RISER TO POLE GROUND
2	INSTALL 3-WIRE COPPER SERVICE ENTRANCE CONDUCTORS	12	INSTALL RIGID, GALVANIZED STEEL RISER WITH HEAT SHRINK TUBING	23	INSTALL NEW RISER INTO CABINET BASE (USE EX CABINET ENTRANCE WHEN AVAILABLE)	33	REMOVE EXISTING SPLICE / HUB / CCTV CABINET	44	INSTALL AERIAL GUY ASSEMBLY	55	LASH CABLE(S) TO EXISTING MESSENGER CABLE	67	BOND TRACER WIRE TO EQUIPMENT GROUND BUS
3	INSTALL 3-WIRE COPPER FEEDER CONDUCTORS	13	INSTALL HEAT SHRINK TUBING RETROFIT KIT	24	INSTALL NEW CONDUIT INTO POLE MOUNTED CABINET	34	INSTALL CABINET FOUNDATION	45	INSTALL STANDARD GUY ASSEMBLY	56	LASH CABLE(S) TO NEW MESSENGER CABLE	68	NOT USED
4	INSTALL SMFO CABLE	14	INSTALL HIGH DENSITY POLYETHYLENE CONDUIT	25	INSTALL NEW RISER INTO POLE MOUNTED CABINET	35	REMOVE EXISTING CABINET FOUNDATION	46	INSTALL SIDEWALK GUY ASSEMBLY	57	MODIFY EXISTING ELECTRICAL SERVICE	69	HANDLASH AND INSTALL AERIAL CABLE PROTECTOR
5	INSTALL COAXIAL ANTENNA CABLE	15	DIRECTIONAL DRILL CONDUIT	26	INSTALL DIGITAL VIDEO ENCODER	36	INSTALL CCTV CAMERA ASSEMBLY	47	INSTALL MESSENGER CABLE	58	INSTALL NEW ELECTRICAL SERVICE	70	INSTALL EQUIPMENT CABINET DISCONNECT
6	INSTALL FIBER-OPTIC DROP CABLE	16	BORE AND JACK CONDUIT	27	INSTALL NEW ETHERNET EDGE SWITCH IN CABINET	37	INSTALL CCTV CAMERA WOOD POLE	48	REMOVE EXISTING COMMUNICATIONS CABLE AND MESSENGER CABLE	59	INSTALL NEW POLE MOUNTED CCTV CABINET (336)	71	INSTALL MANAGED ETHERNET SWITCH
7	INSTALL TRACER WIRE	17	INSTALL CABLE(S) IN EXISTING CONDUIT	28	INSTALL INTERCONNECT CENTER, PATCH PANEL, JUMPERS, AND FUSION SPLICE CABLE IN CABINET	38	INSTALL STANDARD SIZE JUNCTION BOX	49	REMOVE EXISTING COMMUNICATIONS CABLE	60	INSTALL NEW CCTV CABINET (NEMA TYPE 4)	72	INSTALL CCTV METAL POLE
8	INSTALL CONDUIT UNDERGROUND	18	INSTALL CABLE(S) IN NEW CONDUIT	29	INSTALL UNDERGROUND SPLICE ENCLOSURE	39	INSTALL SPECIAL-SIZED JUNCTION BOX (36" x 24" x 24")	50	INSTALL SERVICE CONDUCTORS	61	REMOVE EXISTING CCTV CAMERA ASSEMBLY	73	REMOVE EXISTING CCTV METAL POLE
9	INSTALL PVC CONDUIT	19	INSTALL CABLE(S) IN EXISTING RISER(S)	30	INSTALL AERIAL SPLICE ENCLOSURE	40	INSTALL OVER-SIZED JUNCTION BOX	51	INSTALL CABLE STORAGE GUIDE(S) (SNOW SHOE(S) AND STORE 100 FEET OF EACH CABLE)	62	NEW CABINET ENTRANCE INTO NEW FOUNDATION	74	REMOVE WIRELESS COMMUNICATIONS EQUIPMENT
10	INSTALL RIGID, GALVANIZED STEEL CONDUIT	21	INSTALL CABLE(S) IN EXISTING CABINET ENTRANCE	31	INSTALL TYPE 332 HUB CABINET	41	REMOVE EXISTING JUNCTION BOX	52A	INSTALL DELINEATOR MARKER	63	DRILL/CORE DRILL EXISTING FOUNDATION	75	BACKPULL AND COIL NCDOT ITS CABLE
						42	INSTALL WOOD POLE	52B	INSTALL JUNCTION BOX MARKER	76	INSTALL HUB SWITCH		
								53	STORE 30' OF COMMUNICATIONS CABLE (EACH CABLE)	77	INSTALL CELLULAR MODEM		
									55	BOND MESSENGER TO POLE GROUND			



ATKINS 1616 EAST MILLBROOK ROAD, SUITE 160 RALEIGH, NORTH CAROLINA 27609 (919) 876-8888 NCBES #F-0326

DOCUMENT NOT CONSIDERED FINAL UNLESS ALL SIGNATURES COMPLETED

Prepared for the Offices of:

Fuquay-Varina Signal System Cable Routing Plans

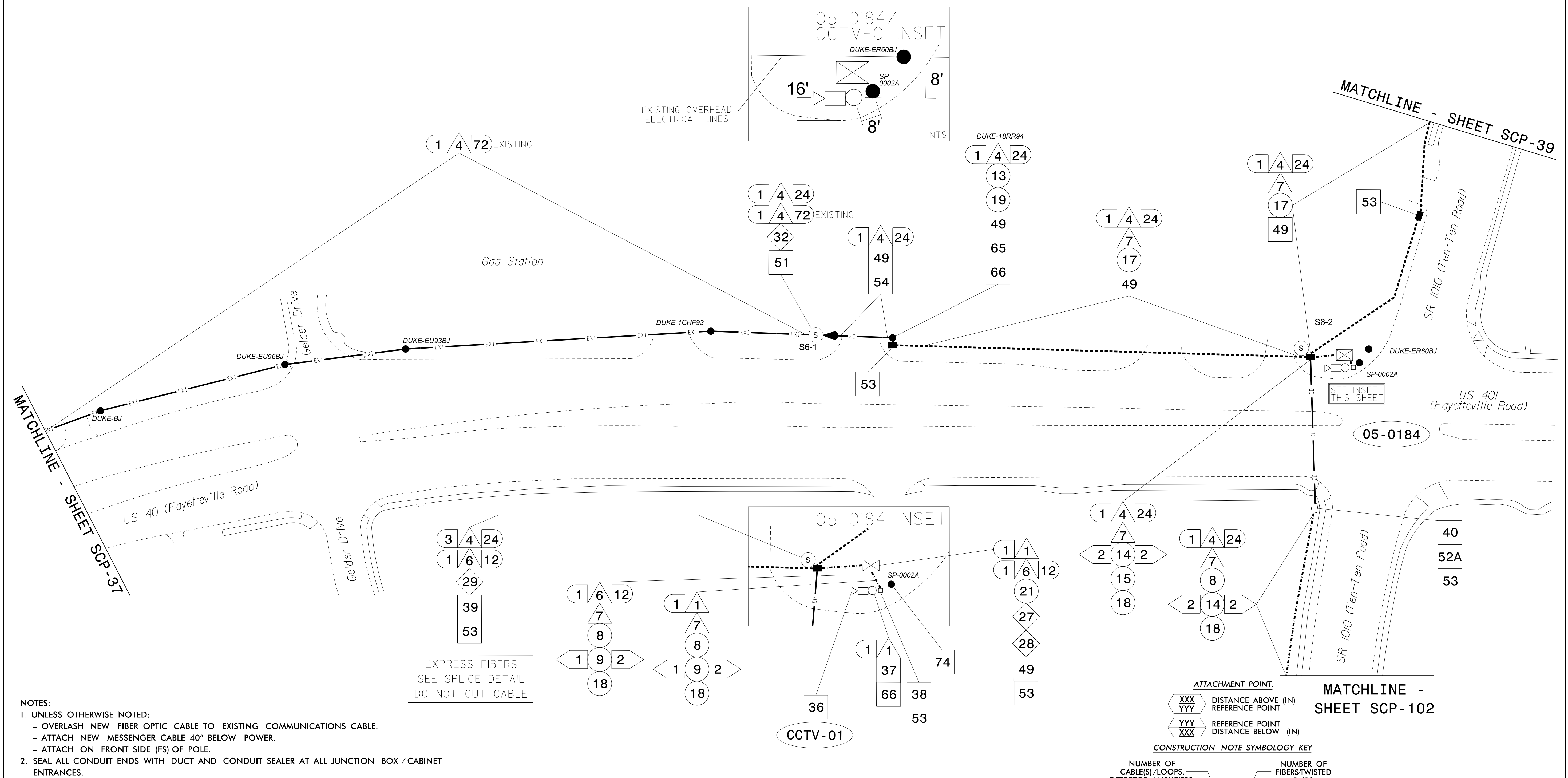
Division 5	Wake County	Fuquay-Varina
PLAN DATE: June 2022	REVIEWED BY: MB Toth	
PREPARED BY: JT Stiff	REVIEWED BY: AM Encarnacion	
REVISIONS	INIT.	DATE

SCALE: 0 50 1"=50'

Seal:

CADD File Name: CL=32.dgn

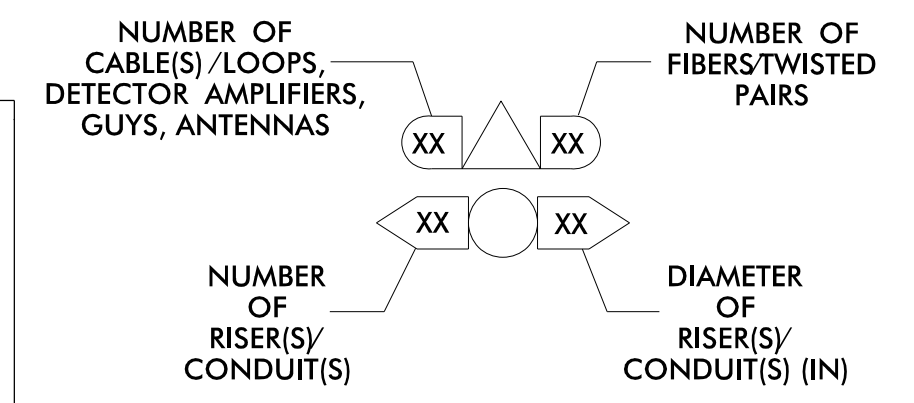
16-MB-2023-16154
 //S:\ED00036353\proj\100063268_Fuquay_Varina\Task 11_CL\CL-32.dgn
 5/11/2023 10:51:08 AM AT LUS01089



NOTES:
 1. UNLESS OTHERWISE NOTED:
 - OVERLASH NEW FIBER OPTIC CABLE TO EXISTING COMMUNICATIONS CABLE.
 - ATTACH NEW MESSENGER CABLE 40" BELOW POWER.
 - ATTACH ON FRONT SIDE (FS) OF POLE.
 2. SEAL ALL CONDUIT ENDS WITH DUCT AND CONDUIT SEALER AT ALL JUNCTION BOX / CABINET ENTRANCES.

EXPRESS FIBERS
 SEE SPICE DETAIL
 DO NOT CUT CABLE

ATTACHMENT POINT:
 XXX DISTANCE ABOVE (IN) REFERENCE POINT
 YYY REFERENCE POINT
 XXX DISTANCE BELOW (IN)
CONSTRUCTION NOTE SYMBOLY KEY



- | | | | | | | |
|---|--|---|---|---|--|--|
| 1 INSTALL CATEGORY 6 CABLE | 11 INSTALL RIGID, GALVANIZED STEEL RISER WITH WEATHERHEAD | 22 INSTALL NEW CONDUIT INTO CABINET BASE (USE EX CABINET ENTRANCE WHEN AVAILABLE) | 32 MODIFY EXISTING SPICE ENCLOSURE OR INTERCONNECT CENTER | 43 REMOVE EXISTING WOOD POLE | 54 LASH CABLE(S) TO EXISTING SIGNAL/COMMUNICATIONS CABLE | 66 BOND RISER TO POLE GROUND |
| 2 INSTALL 3-WIRE COPPER SERVICE ENTRANCE CONDUCTORS | 12 INSTALL RIGID, GALVANIZED STEEL RISER WITH HEAT SHRINK TUBING | 23 INSTALL NEW RISER INTO CABINET BASE (USE EX CABINET ENTRANCE WHEN AVAILABLE) | 33 REMOVE EXISTING SPICE / HUB / CCTV CABINET | 44 INSTALL AERIAL GUY ASSEMBLY | 55 LASH CABLE(S) TO EXISTING MESSENGER CABLE | 67 BOND TRACER WIRE TO EQUIPMENT GROUND BUS |
| 3 INSTALL 3-WIRE COPPER FEEDER CONDUCTORS | 13 INSTALL HEAT SHRINK TUBING RETROFIT KIT | 24 INSTALL NEW CONDUIT INTO POLE MOUNTED CABINET | 34 INSTALL CABINET FOUNDATION | 45 INSTALL STANDARD GUY ASSEMBLY | 56 LASH CABLE(S) TO NEW MESSENGER CABLE | 68 NOT USED |
| 4 INSTALL SMFO CABLE | 14 INSTALL HIGH DENSITY POLYETHYLENE CONDUIT | 25 INSTALL NEW RISER INTO POLE MOUNTED CABINET | 35 REMOVE EXISTING CABINET FOUNDATION | 46 INSTALL SIDEWALK GUY ASSEMBLY | 57 MODIFY EXISTING ELECTRICAL SERVICE | 69 HANDLASH AND INSTALL AERIAL CABLE PROTECTOR |
| 5 INSTALL COAXIAL ANTENNA CABLE | 15 DIRECTIONAL DRILL CONDUIT | 26 INSTALL DIGITAL VIDEO ENCODER | 36 INSTALL CCTV CAMERA ASSEMBLY | 47 INSTALL MESSENGER CABLE | 58 INSTALL NEW ELECTRICAL SERVICE | 70 INSTALL EQUIPMENT CABINET DISCONNECT |
| 6 INSTALL FIBER-OPTIC DROP CABLE | 16 BORE AND JACK CONDUIT | 27 INSTALL NEW ETHERNET EDGE SWITCH IN CABINET | 37 INSTALL CCTV CAMERA WOOD POLE | 48 REMOVE EXISTING COMMUNICATIONS CABLE AND MESSENGER CABLE | 59 INSTALL NEW POLE MOUNTED CCTV CABINET (336) | 71 INSTALL MANAGED ETHERNET SWITCH |
| 7 INSTALL TRACER WIRE | 17 INSTALL CABLE(S) IN EXISTING CONDUIT | 28 INSTALL INTERCONNECT CENTER, PATCH PANEL, JUMPERS, AND FUSION SPICE CABLE IN CABINET | 38 INSTALL STANDARD SIZE JUNCTION BOX | 49 REMOVE EXISTING COMMUNICATIONS CABLE | 60 INSTALL NEW CCTV CABINET (NEMA TYPE 4) | 72 INSTALL CCTV METAL POLE |
| 8 INSTALL CONDUIT UNDERGROUND | 18 INSTALL CABLE(S) IN NEW CONDUIT | 29 INSTALL UNDERGROUND SPICE ENCLOSURE | 39 INSTALL SPECIAL-SIZED JUNCTION BOX (36" x 24" x 24") | 50 INSTALL SERVICE CONDUCTORS | 61 REMOVE EXISTING CCTV CAMERA ASSEMBLY | 73 REMOVE EXISTING CCTV METAL POLE |
| 9 INSTALL PVC CONDUIT | 19 INSTALL CABLE(S) IN EXISTING RISER(S) | 30 INSTALL AERIAL SPICE ENCLOSURE | 40 INSTALL OVER-SIZED JUNCTION BOX | 51 INSTALL CABLE STORAGE GUIDE(S) (SNOW SHOE(S)) AND STORE 100 FEET OF EACH CABLE | 62 NEW CABINET ENTRANCE INTO NEW FOUNDATION | 74 REMOVE WIRELESS COMMUNICATIONS EQUIPMENT |
| 10 INSTALL RIGID, GALVANIZED STEEL CONDUIT | 20 INSTALL CABLE(S) IN NEW RISER(S) | 31 INSTALL TYPE 332 HUB CABINET | 41 REMOVE EXISTING JUNCTION BOX | 52A INSTALL DELINEATOR MARKER | 63 DRILL/CORE DRILL EXISTING FOUNDATION | 75 BACKPULL AND COIL NCDOT ITS CABLE |
| | | | 42 INSTALL WOOD POLE | 52B INSTALL JUNCTION BOX MARKER | 64 INTERCEPT AND REROUTE EXISTING CONDUITS | 76 INSTALL HUB SWITCH |
| | | | | 53 STORE 30' OF COMMUNICATIONS CABLE (EACH CABLE) | 65 BOND MESSENGER TO POLE GROUND | 77 INSTALL CELLULAR MODEM |

ATKINS 1616 EAST MILLBROOK ROAD, SUITE 160 RALEIGH, NORTH CAROLINA 27609 (919) 876-8888 NGBEES #F-0326

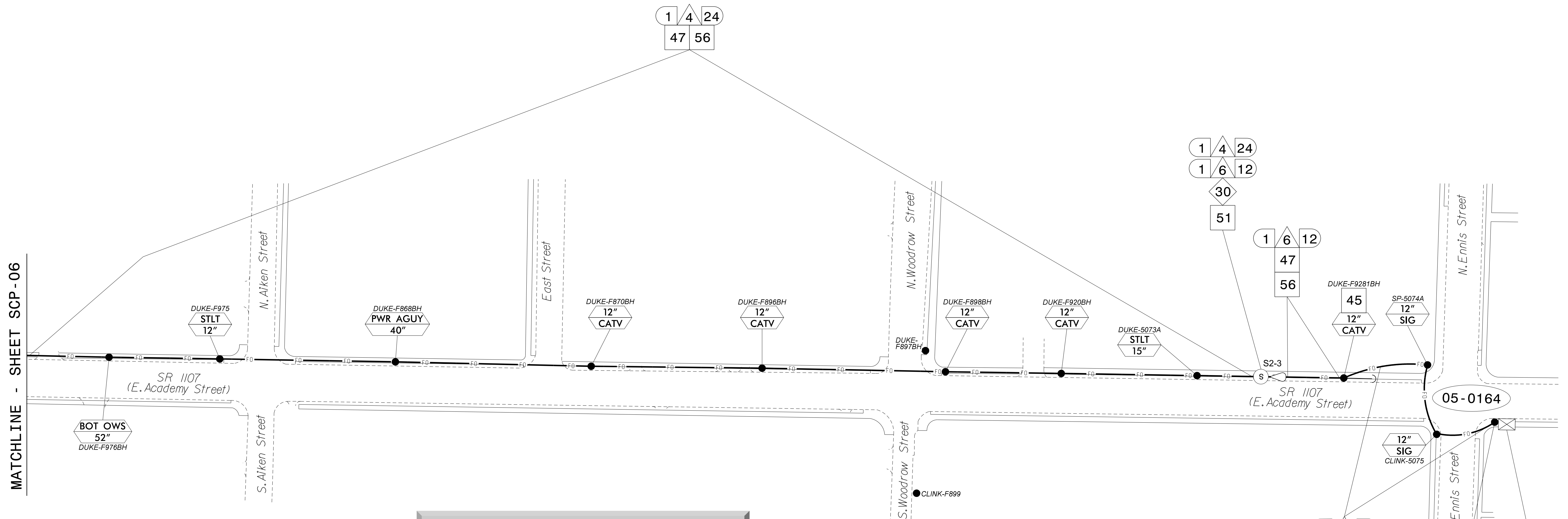
Division 5 Wake County Fuquay-Varina
 PLAN DATE: June 2022 REVIEWED BY: MB Toth
 PREPARED BY: JT Stiff REVIEWED BY: AM Encarnacion

SCALE 0 50 1"=50'

4/14/2023
 SEAL
 NORTH CAROLINA PROFESSIONAL ENGINEER
 SEAL 044476
 AM ENCARNACION
 DATE

DOCUMENT NOT CONSIDERED FINAL UNLESS ALL SIGNATURES COMPLETED

16-MB-2023-16154
 S:\Projects\2023\16154-Fuquay-Varina Signal System\Drawings\Roads and Bridges\Projects\100063268 Fuquay Varina\Task 11_CL/CL-33.dgn
 AT LUS91089

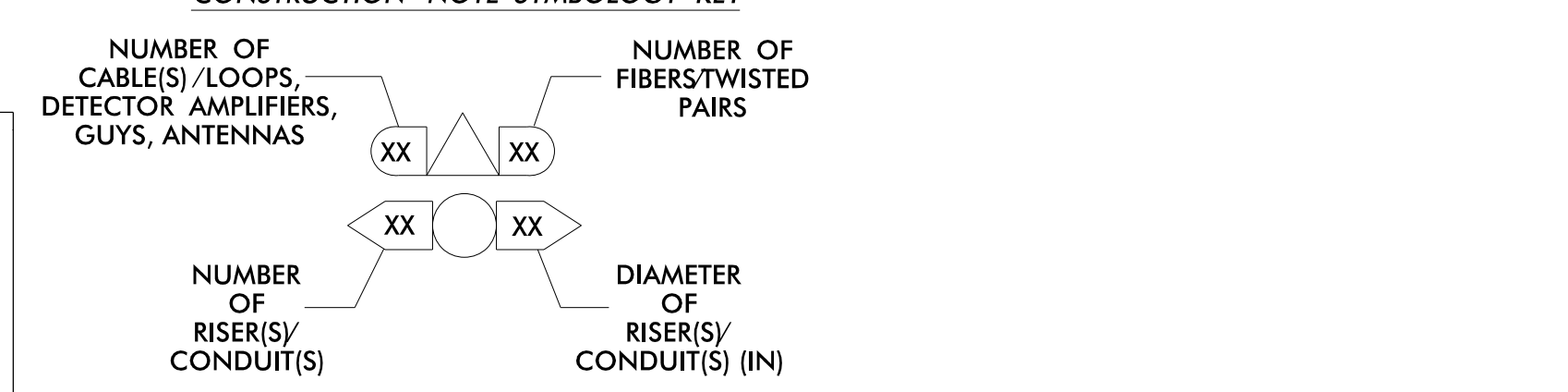
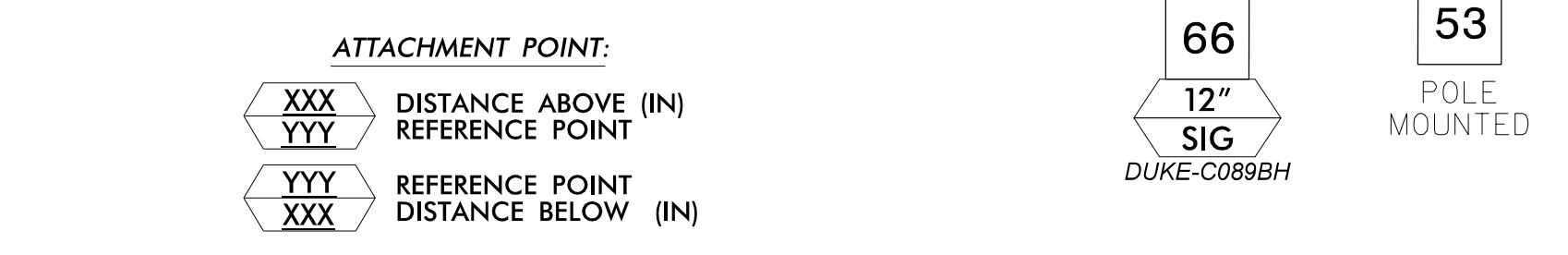


MATCHLINE - SHEET SCP-06

Areas within this project have been determined to contain properties with documented historical significance. If it is necessary to deviate from the plans in an area identified to contain properties with historic significance, alert the engineer to contact Environmental Analysis Unit - Historic Architecture Group of North Carolina Department of Transportation for an effects determination before proceeding.

- NOTES:**
- UNLESS OTHERWISE NOTED:
 - OVERLASH NEW FIBER OPTIC CABLE TO EXISTING COMMUNICATIONS CABLE.
 - ATTACH NEW MESSENGER CABLE 40" BELOW POWER.
 - ATTACH ON FRONT SIDE (FS) OF POLE.
 - SEAL ALL CONDUIT ENDS WITH DUCT AND CONDUIT SEALER AT ALL JUNCTION BOX / CABINET ENTRANCES.

1	INSTALL CATEGORY 6 CABLE	11	INSTALL RIGID, GALVANIZED STEEL RISER WITH WEATHERHEAD	22	INSTALL NEW CONDUIT INTO CABINET BASE (USE EX CABINET ENTRANCE WHEN AVAILABLE)	32	MODIFY EXISTING SPLICE ENCLOSURE OR INTERCONNECT CENTER	43	REMOVE EXISTING WOOD POLE	54	LASH CABLE(S) TO EXISTING SIGNAL/COMMUNICATIONS CABLE	66	BOND RISER TO POLE GROUND
2	INSTALL 3-WIRE COPPER SERVICE ENTRANCE CONDUCTORS	12	INSTALL RIGID, GALVANIZED STEEL RISER WITH HEAT SHRINK TUBING	23	INSTALL NEW RISER INTO CABINET BASE (USE EX CABINET ENTRANCE WHEN AVAILABLE)	33	REMOVE EXISTING SPLICE / HUB / CCTV CABINET	44	INSTALL AERIAL GUY ASSEMBLY	55	LASH CABLE(S) TO EXISTING MESSENGER CABLE	67	BOND TRACER WIRE TO EQUIPMENT GROUND BUS
3	INSTALL 3-WIRE COPPER FEEDER CONDUCTORS	13	INSTALL HEAT SHRINK TUBING RETROFIT KIT	24	INSTALL NEW CONDUIT INTO POLE MOUNTED CABINET	34	INSTALL CABINET FOUNDATION	45	INSTALL STANDARD GUY ASSEMBLY	56	LASH CABLE(S) TO NEW MESSENGER CABLE	68	NOT USED
4	INSTALL SMFO CABLE	14	INSTALL HIGH DENSITY POLYETHYLENE CONDUIT	25	INSTALL NEW RISER INTO POLE MOUNTED CABINET	35	REMOVE EXISTING CABINET FOUNDATION	46	INSTALL SIDEWALK GUY ASSEMBLY	57	MODIFY EXISTING ELECTRICAL SERVICE	69	HANDLASH AND INSTALL AERIAL CABLE PROTECTOR
5	INSTALL COAXIAL ANTENNA CABLE	15	DIRECTIONAL DRILL CONDUIT	26	INSTALL DIGITAL VIDEO ENCODER	36	INSTALL CCTV CAMERA ASSEMBLY	47	INSTALL MESSENGER CABLE	58	INSTALL NEW ELECTRICAL SERVICE	70	INSTALL EQUIPMENT CABINET DISCONNECT
6	INSTALL FIBER-OPTIC DROP CABLE	16	BORE AND JACK CONDUIT	27	INSTALL NEW ETHERNET EDGE SWITCH IN CABINET	37	INSTALL CCTV CAMERA WOOD POLE	48	REMOVE EXISTING COMMUNICATIONS CABLE AND MESSENGER CABLE	59	INSTALL NEW POLE MOUNTED CCTV CABINET (336)	71	INSTALL MANAGED ETHERNET SWITCH
7	INSTALL TRACER WIRE	17	INSTALL CABLE(S) IN EXISTING CONDUIT	28	INSTALL INTERCONNECT CENTER, PATCH PANEL, JUMPERS, AND FUSION SPLICE CABLE IN CABINET	38	INSTALL STANDARD SIZE JUNCTION BOX	49	REMOVE EXISTING COMMUNICATIONS CABLE	60	INSTALL NEW CCTV CABINET (NEMA TYPE 4)	72	INSTALL CCTV METAL POLE
8	INSTALL CONDUIT UNDERGROUND	18	INSTALL CABLE(S) IN NEW CONDUIT	29	INSTALL UNDERGROUND SPLICE ENCLOSURE	39	INSTALL SPECIAL-SIZED JUNCTION BOX (36" x 24" x 24")	50	INSTALL SERVICE CONDUCTORS	61	REMOVE EXISTING CCTV CAMERA ASSEMBLY	73	REMOVE EXISTING CCTV METAL POLE
9	INSTALL PVC CONDUIT	19	INSTALL CABLE(S) IN EXISTING RISER(S)	30	INSTALL AERIAL SPLICE ENCLOSURE	40	INSTALL OVER-SIZED JUNCTION BOX	51	INSTALL CABLE STORAGE GUIDE(S) (SNOW SHOE(S)) AND STORE 100 FEET OF EACH CABLE	62	NEW CABINET ENTRANCE INTO NEW FOUNDATION	74	REMOVE WIRELESS COMMUNICATIONS EQUIPMENT
10	INSTALL RIGID, GALVANIZED STEEL CONDUIT	21	INSTALL CABLE(S) IN EXISTING CABINET ENTRANCE	31	INSTALL TYPE 332 HUB CABINET	41	REMOVE EXISTING JUNCTION BOX	52A	INSTALL DELINEATOR MARKER	63	DRILL/CORE DRILL EXISTING FOUNDATION	75	BACKPULL AND COIL NCDOT ITS CABLE
						42	INSTALL WOOD POLE	52B	INSTALL JUNCTION BOX MARKER	76	INSTALL HUB SWITCH		
								53	STORE 30' OF COMMUNICATIONS CABLE (EACH CABLE)	77	INSTALL CELLULAR MODEM		



ATKINS 1616 EAST MILLBROOK ROAD, SUITE 160 RALEIGH, NORTH CAROLINA 27609 (919) 876-8888 NCBEES #F-03226

Prepared for the Offices of: **Wake County**

Fuquay-Varina Signal System Cable Routing Plans

Division 5 Wake County Fuquay-Varina

PLAN DATE: June 2022 REVIEWED BY: MB Toth

PREPARED BY: JT Stiff REVIEWED BY: AM Encarnacion

REVISIONS: _____ INIT. DATE

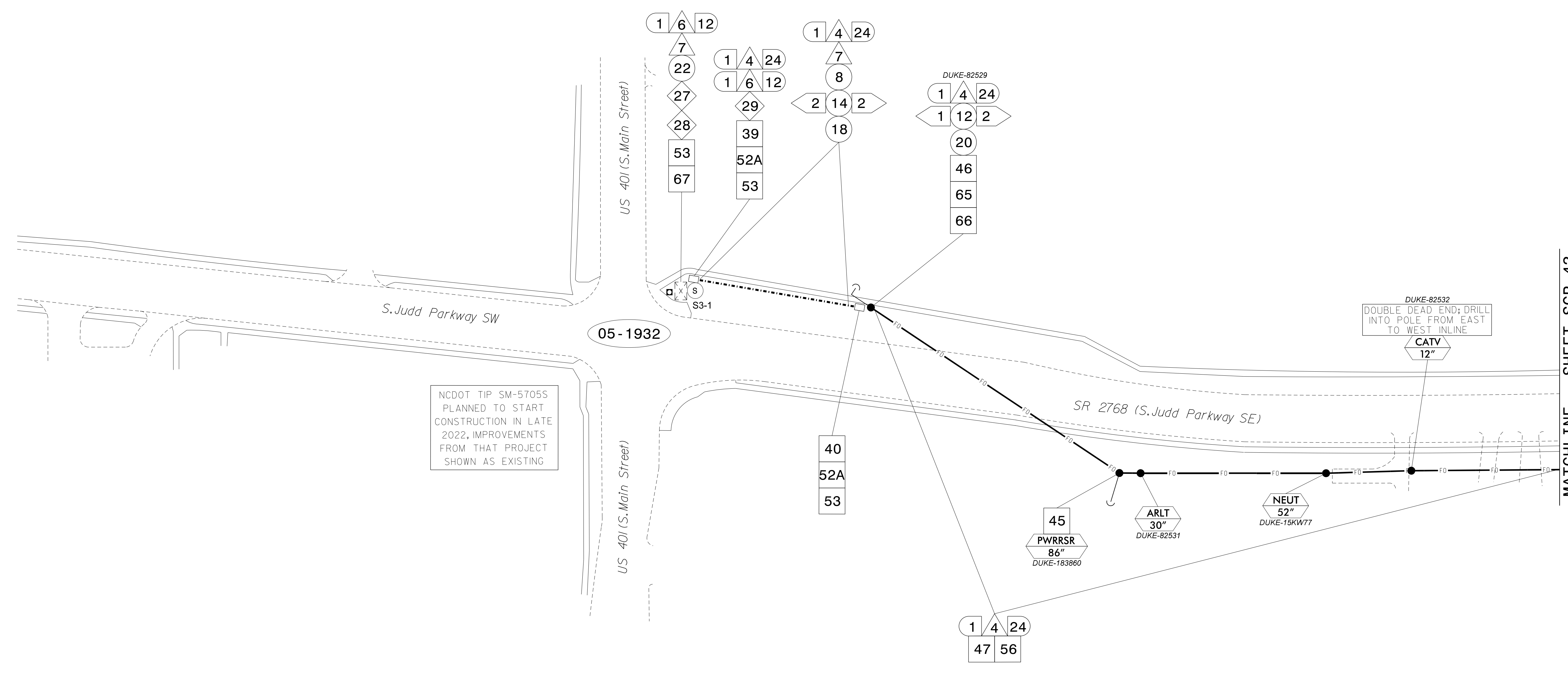
SCALE: 0 50 1"=50'

SEAL: NORTH CAROLINA PROFESSIONAL ENGINEER SEAL 044476

DATE: 4/14/2023

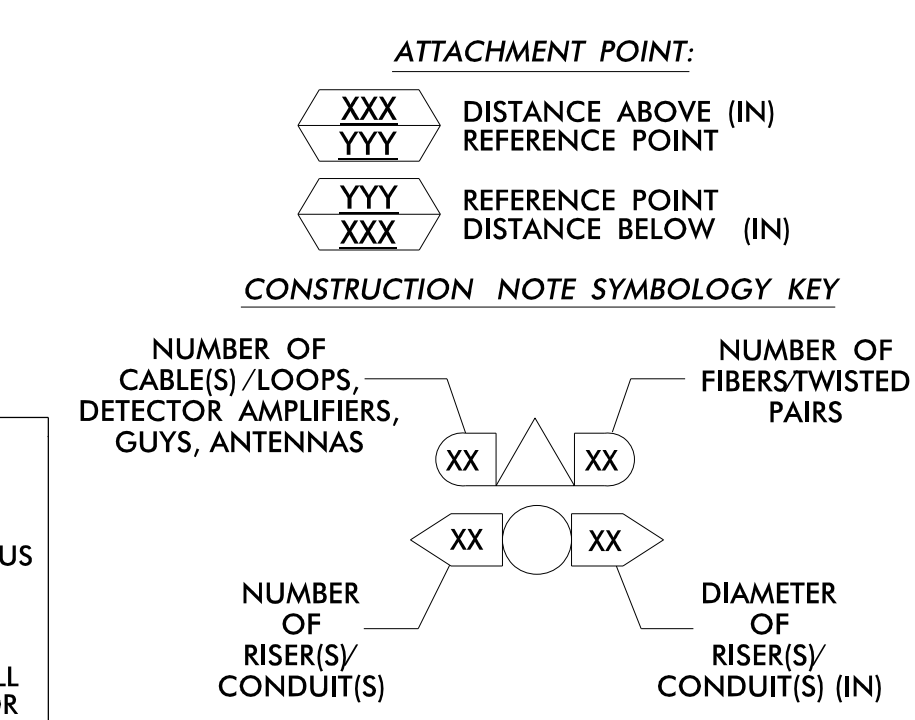
CADD File name: CL=36.dgn

16-MB-2023-16155
S:\Projects\2023\16155\Drawings\Roads and Bridges\Projects\100063268 Fuquay Varina\Task 11_CL\CL-36.dgn
S:\Projects\2023\16155\Drawings\Roads and Bridges\Projects\100063268 Fuquay Varina\Task 11_CL\CL-36.dgn



MATCHLINE - SHEET SCP-43

- NOTES:**
- UNLESS OTHERWISE NOTED:
 - OVERLASH NEW FIBER OPTIC CABLE TO EXISTING COMMUNICATIONS CABLE.
 - ATTACH NEW MESSENGER CABLE 40" BELOW POWER.
 - ATTACH ON FRONT SIDE (FS) OF POLE.
 - SEAL ALL CONDUIT ENDS WITH DUCT AND CONDUIT SEALER AT ALL JUNCTION BOX / CABINET ENTRANCES.



1 INSTALL CATEGORY 6 CABLE	11 INSTALL RIGID, GALVANIZED STEEL RISER WITH WEATHERHEAD	22 INSTALL NEW CONDUIT INTO CABINET BASE (USE EX CABINET ENTRANCE WHEN AVAILABLE)	32 MODIFY EXISTING SPLICE ENCLOSURE OR INTERCONNECT CENTER	43 REMOVE EXISTING WOOD POLE	54 LASH CABLE(S) TO EXISTING SIGNAL/COMMUNICATIONS CABLE	66 BOND RISER TO POLE GROUND
2 INSTALL 3-WIRE COPPER SERVICE ENTRANCE CONDUCTORS	12 INSTALL RIGID, GALVANIZED STEEL RISER WITH HEAT SHRINK TUBING	23 INSTALL NEW RISER INTO CABINET BASE (USE EX CABINET ENTRANCE WHEN AVAILABLE)	33 REMOVE EXISTING SPLICE /HUB / CCTV CABINET	44 INSTALL AERIAL GUY ASSEMBLY	55 LASH CABLE(S) TO EXISTING MESSENGER CABLE	67 BOND TRACER WIRE TO EQUIPMENT GROUND BUS
3 INSTALL 3-WIRE COPPER FEEDER CONDUCTORS	13 INSTALL HEAT SHRINK TUBING RETROFIT KIT	24 INSTALL NEW CONDUIT INTO POLE MOUNTED CABINET	34 INSTALL CABINET FOUNDATION	45 INSTALL STANDARD GUY ASSEMBLY	56 LASH CABLE(S) TO NEW MESSENGER CABLE	68 NOT USED
4 INSTALL SMFO CABLE	14 INSTALL HIGH DENSITY POLYETHYLENE CONDUIT	25 INSTALL NEW RISER INTO POLE MOUNTED CABINET	35 REMOVE EXISTING CABINET FOUNDATION	46 INSTALL SIDEWALK GUY ASSEMBLY	57 MODIFY EXISTING ELECTRICAL SERVICE	69 HANDLASH AND INSTALL AERIAL CABLE PROTECTOR
5 INSTALL COAXIAL ANTENNA CABLE	15 DIRECTIONAL DRILL CONDUIT	26 INSTALL DIGITAL VIDEO ENCODER	36 REMOVE EXISTING CCTV CAMERA ASSEMBLY	47 INSTALL MESSENGER CABLE	58 INSTALL NEW ELECTRICAL SERVICE	70 INSTALL EQUIPMENT CABINET DISCONNECT
6 INSTALL FIBER-OPTIC DROP CABLE	16 BORE AND JACK CONDUIT	27 INSTALL NEW ETHERNET EDGE SWITCH IN CABINET	37 INSTALL CCTV CAMERA WOOD POLE	48 REMOVE EXISTING COMMUNICATIONS CABLE AND MESSENGER CABLE	59 INSTALL NEW POLE MOUNTED CCTV CABINET (336)	71 INSTALL MANAGED ETHERNET SWITCH
7 INSTALL TRACER WIRE	17 INSTALL CABLE(S) IN EXISTING CONDUIT	28 INSTALL INTERCONNECT CENTER, PATCH PANEL, JUMPERS, AND FUSION SPLICE CABLE IN CABINET	38 INSTALL STANDARD SIZE JUNCTION BOX	49 REMOVE EXISTING COMMUNICATIONS CABLE	60 INSTALL NEW CCTV CABINET (NEMA TYPE 4)	72 INSTALL CCTV METAL POLE
8 INSTALL CONDUIT UNDERGROUND	18 INSTALL CABLE(S) IN NEW CONDUIT	29 INSTALL UNDERGROUND SPLICE ENCLOSURE	39 INSTALL SPECIAL-SIZED JUNCTION BOX (36" x 24" x 24")	50 INSTALL SERVICE CONDUCTORS	61 REMOVE EXISTING CCTV CAMERA ASSEMBLY	73 REMOVE EXISTING CCTV METAL POLE
9 INSTALL PVC CONDUIT	19 INSTALL CABLE(S) IN EXISTING RISER(S)	30 INSTALL AERIAL SPLICE ENCLOSURE	40 INSTALL OVER-SIZED JUNCTION BOX	51 INSTALL CABLE STORAGE GUIDE(S) (SNOW SHOE(S) AND STORE 100 FEET OF EACH CABLE)	62 NEW CABINET ENTRANCE INTO NEW FOUNDATION	74 REMOVE WIRELESS COMMUNICATIONS EQUIPMENT
10 INSTALL RIGID, GALVANIZED STEEL CONDUIT	20 INSTALL CABLE(S) IN NEW RISER(S)	31 INSTALL TYPE 332 HUB CABINET	41 REMOVE EXISTING JUNCTION BOX	52A INSTALL DELINEATOR MARKER	63 DRILL/CORE DRILL EXISTING FOUNDATION	75 BACKPULL AND COIL NCDOT ITS CABLE
			42 INSTALL WOOD POLE	52B INSTALL JUNCTION BOX MARKER	64 INTERCEPT AND REROUTE EXISTING CONDUITS	76 INSTALL HUB SWITCH
				53 STORE 30' OF COMMUNICATIONS CABLE (EACH CABLE)	65 BOND MESSENGER TO POLE GROUND	77 INSTALL CELLULAR MODEM

ATKINS 1616 EAST MILLBROOK ROAD, SUITE 160
RALEIGH, NORTH CAROLINA 27609
(919) 876-6888 NCBEE #F-0326

Prepared for the Offices of:

DOCUMENT NOT CONSIDERED FINAL UNLESS ALL SIGNATURES COMPLETED

Fuquay-Varina Signal System Cable Routing Plans

Division 5 Wake County Fuquay-Varina

PLAN DATE: June 2022 REVIEWED BY: MB Toth

PREPARED BY: JT Stiff REVIEWED BY: AM Encarnacion

REVISIONS: INIT. DATE

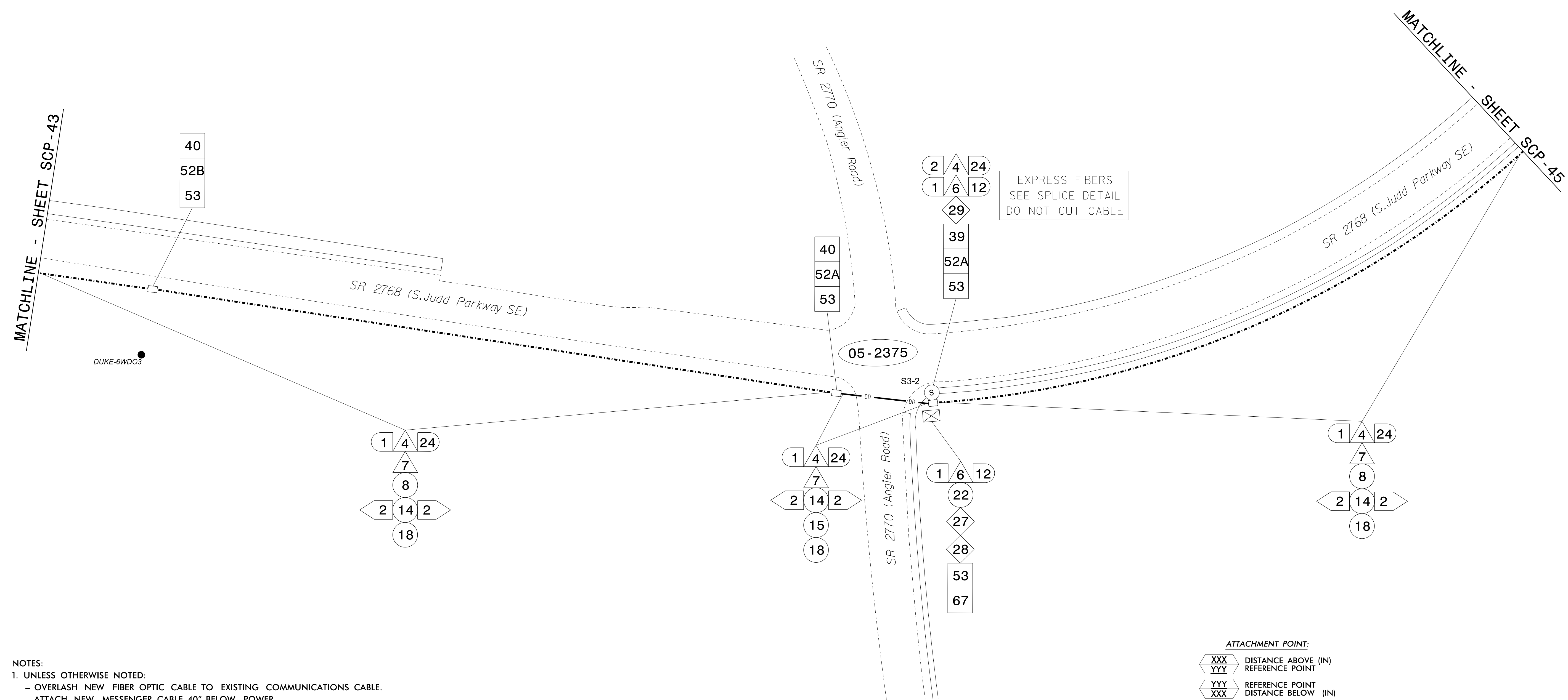
SCALE: 1"=50'

Seal: NORTH CAROLINA PROFESSIONAL ENGINEER SEAL 044476

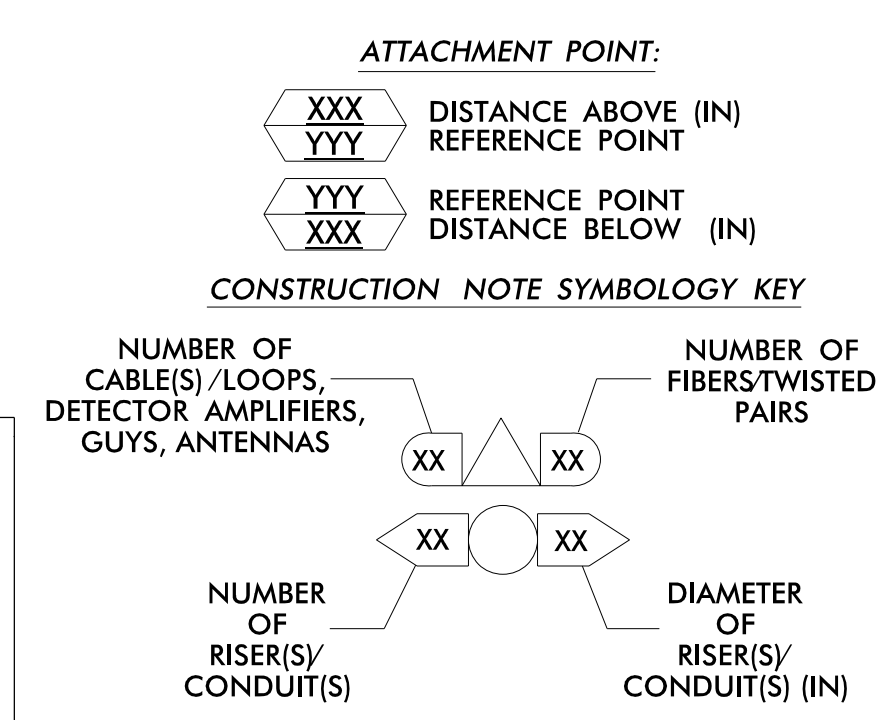
Signature: Anthony Encarnacion 4/14/2023

CADD File Name: CL=37.dgn

16-MB-2023-16155
\\FS100003635\cort\KINMAN\01\Documents\Roads and Bridges\Projects\100063268_Fuquay_Var\ncr\Task 11_CL\CL-37.dgn
5/11/2023 AT 10:59:10 AM



- NOTES:**
- UNLESS OTHERWISE NOTED:
 - OVERLASH NEW FIBER OPTIC CABLE TO EXISTING COMMUNICATIONS CABLE.
 - ATTACH NEW MESSENGER CABLE 40" BELOW POWER.
 - ATTACH ON FRONT SIDE (FS) OF POLE.
 - SEAL ALL CONDUIT ENDS WITH DUCT AND CONDUIT SEALER AT ALL JUNCTION BOX / CABINET ENTRANCES.



1 INSTALL CATEGORY 6 CABLE	11 INSTALL RIGID, GALVANIZED STEEL RISER WITH WEATHERHEAD	22 INSTALL NEW CONDUIT INTO CABINET BASE (USE EX CABINET ENTRANCE WHEN AVAILABLE)	32 MODIFY EXISTING SPLICE ENCLOSURE OR INTERCONNECT CENTER	43 REMOVE EXISTING WOOD POLE	54 LASH CABLE(S) TO EXISTING SIGNAL/COMMUNICATIONS CABLE	66 BOND RISER TO POLE GROUND
2 INSTALL 3-WIRE COPPER SERVICE ENTRANCE CONDUCTORS	12 INSTALL RIGID, GALVANIZED STEEL RISER WITH HEAT SHRINK TUBING	23 INSTALL NEW RISER INTO CABINET BASE (USE EX CABINET ENTRANCE WHEN AVAILABLE)	33 REMOVE EXISTING SPLICE / HUB / CCTV CABINET	44 INSTALL AERIAL GUY ASSEMBLY	55 LASH CABLE(S) TO EXISTING MESSENGER CABLE	67 BOND TRACER WIRE TO EQUIPMENT GROUND BUS
3 INSTALL 3-WIRE COPPER FEEDER CONDUCTORS	13 INSTALL HEAT SHRINK TUBING RETROFIT KIT	24 INSTALL NEW CONDUIT INTO POLE MOUNTED CABINET	34 INSTALL CABINET FOUNDATION	45 INSTALL STANDARD GUY ASSEMBLY	56 LASH CABLE(S) TO NEW MESSENGER CABLE	68 NOT USED
4 INSTALL SMFO CABLE	14 INSTALL HIGH DENSITY POLYETHYLENE CONDUIT	25 INSTALL NEW RISER INTO POLE MOUNTED CABINET	35 REMOVE EXISTING CABINET FOUNDATION	46 INSTALL SIDEWALK GUY ASSEMBLY	57 MODIFY EXISTING ELECTRICAL SERVICE	69 HANDLASH AND INSTALL AERIAL CABLE PROTECTOR
5 INSTALL COAXIAL ANTENNA CABLE	15 DIRECTIONAL DRILL CONDUIT	26 INSTALL DIGITAL VIDEO ENCODER	36 INSTALL CCTV CAMERA ASSEMBLY	47 INSTALL MESSENGER CABLE	58 INSTALL NEW ELECTRICAL SERVICE	70 INSTALL EQUIPMENT CABINET DISCONNECT
6 INSTALL FIBER-OPTIC DROP CABLE	16 BORE AND JACK CONDUIT	27 INSTALL NEW ETHERNET EDGE SWITCH IN CABINET	37 INSTALL CCTV CAMERA WOOD POLE	48 REMOVE EXISTING COMMUNICATIONS CABLE AND MESSENGER CABLE	59 INSTALL NEW POLE MOUNTED CCTV CABINET (336)	71 INSTALL MANAGED ETHERNET SWITCH
7 INSTALL TRACER WIRE	17 INSTALL CABLE(S) IN EXISTING CONDUIT	28 INSTALL INTERCONNECT CENTER, PATCH PANEL, JUMPERS, AND FUSION SPLICE CABLE IN CABINET	38 INSTALL STANDARD SIZE JUNCTION BOX	49 REMOVE EXISTING COMMUNICATIONS CABLE	60 INSTALL NEW CCTV CABINET (NEMA TYPE 4)	72 INSTALL CCTV METAL POLE
8 INSTALL CONDUIT UNDERGROUND	18 INSTALL CABLE(S) IN NEW CONDUIT	29 INSTALL UNDERGROUND SPLICE ENCLOSURE	39 INSTALL SPECIAL-SIZED JUNCTION BOX (36" x 24" x 24")	50 INSTALL SERVICE CONDUCTORS	61 REMOVE EXISTING CCTV CAMERA ASSEMBLY	73 REMOVE EXISTING CCTV METAL POLE
9 INSTALL PVC CONDUIT	19 INSTALL CABLE(S) IN EXISTING RISER(S)	30 INSTALL AERIAL SPLICE ENCLOSURE	40 INSTALL OVER-SIZED JUNCTION BOX	51 INSTALL CABLE STORAGE GUIDE(S) (SNOW SHOE(S) AND STORE 100 FEET OF EACH CABLE)	62 NEW CABINET ENTRANCE INTO NEW FOUNDATION	74 REMOVE WIRELESS COMMUNICATIONS EQUIPMENT
10 INSTALL RIGID, GALVANIZED STEEL CONDUIT	20 INSTALL CABLE(S) IN NEW RISER(S)	31 INSTALL TYPE 332 HUB CABINET	41 REMOVE EXISTING JUNCTION BOX	52A INSTALL DELINEATOR MARKER	63 DRILL/CORE DRILL EXISTING FOUNDATION	75 BACKPULL AND COIL NCDOT ITS CABLE
			42 INSTALL WOOD POLE	52B INSTALL JUNCTION BOX MARKER	64 INTERCEPT AND REROUTE EXISTING CONDUITS	76 INSTALL HUB SWITCH
				53 STORE 30' OF COMMUNICATIONS CABLE (EACH CABLE)	65 BOND MESSENGER TO POLE GROUND	77 INSTALL CELLULAR MODEM

ATKINS 1616 EAST MILLBROOK ROAD, SUITE 160
 RALEIGH, NORTH CAROLINA 27609
 (919) 876-8888 NCBES #F-0326

DOCUMENT NOT CONSIDERED FINAL UNLESS ALL SIGNATURES COMPLETED

Prepared for the Offices of:

Fuquay-Varina Signal System Cable Routing Plans

Division 5 Wake County Fuquay-Varina

PLAN DATE: June 2022 REVIEWED BY: MB Toth

PREPARED BY: JT Stiff REVIEWED BY: AM Encarnacion

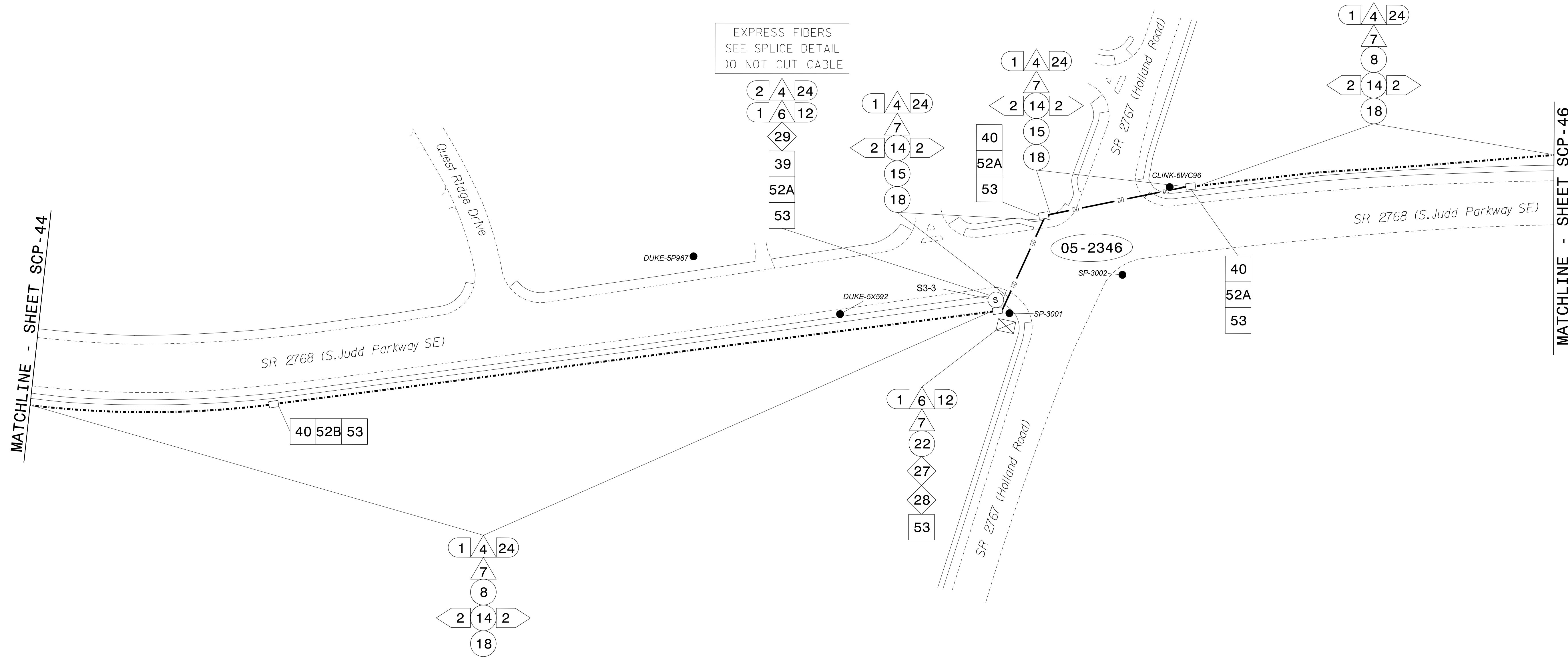
REVISIONS INIT. DATE

SCALE: 1"=50'

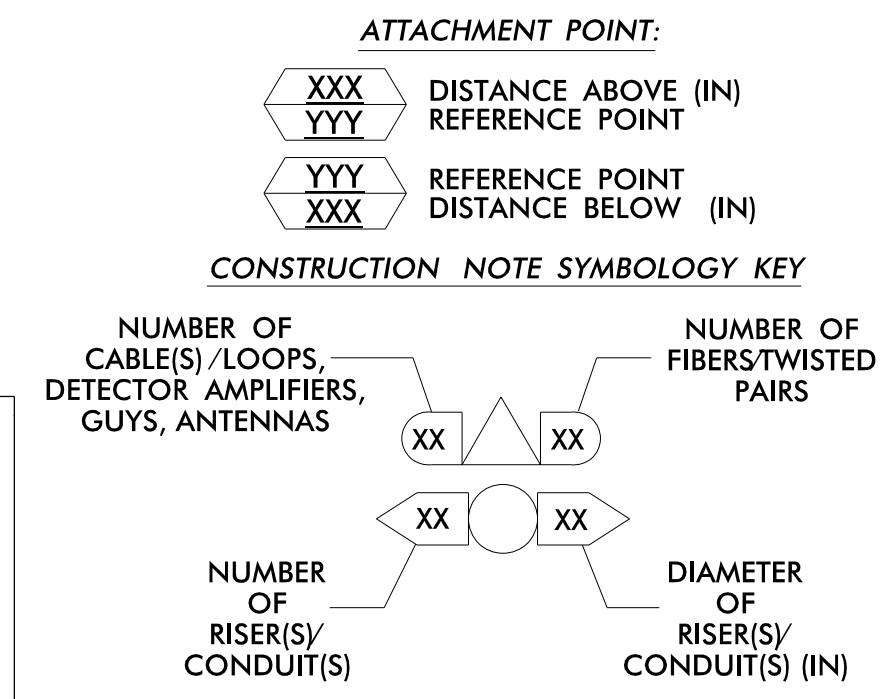
4/14/2023

CADD File name: CL=39.dgn

16-MB-2023-16155
 //S:\ED00036353\proj\100063268_Fuquay_Var\inc\Task_11_CL\CL-39.dgn
 5/11/2023 AT LUS01089



- NOTES:**
- UNLESS OTHERWISE NOTED:
 - OVERLASH NEW FIBER OPTIC CABLE TO EXISTING COMMUNICATIONS CABLE.
 - ATTACH NEW MESSENGER CABLE 40" BELOW POWER.
 - ATTACH ON FRONT SIDE (FS) OF POLE.
 - SEAL ALL CONDUIT ENDS WITH DUCT AND CONDUIT SEALER AT ALL JUNCTION BOX / CABINET ENTRANCES.



1 INSTALL CATEGORY 6 CABLE	11 INSTALL RIGID, GALVANIZED STEEL RISER WITH WEATHERHEAD	22 INSTALL NEW CONDUIT INTO CABINET BASE (USE EX CABINET ENTRANCE WHEN AVAILABLE)	32 MODIFY EXISTING SPLICE ENCLOSURE OR INTERCONNECT CENTER	43 REMOVE EXISTING WOOD POLE	54 LASH CABLE(S) TO EXISTING SIGNAL/COMMUNICATIONS CABLE	66 BOND RISER TO POLE GROUND
2 INSTALL 3-WIRE COPPER SERVICE ENTRANCE CONDUCTORS	12 INSTALL RIGID, GALVANIZED STEEL RISER WITH HEAT SHRINK TUBING	23 INSTALL NEW RISER INTO CABINET BASE (USE EX CABINET ENTRANCE WHEN AVAILABLE)	33 REMOVE EXISTING SPLICE / HUB / CCTV CABINET	44 INSTALL AERIAL GUY ASSEMBLY	55 LASH CABLE(S) TO EXISTING MESSENGER CABLE	67 BOND TRACER WIRE TO EQUIPMENT GROUND BUS
3 INSTALL 3-WIRE COPPER FEEDER CONDUCTORS	13 INSTALL HEAT SHRINK TUBING RETROFIT KIT	24 INSTALL NEW CONDUIT INTO POLE MOUNTED CABINET	34 INSTALL CABINET FOUNDATION	45 INSTALL STANDARD GUY ASSEMBLY	56 LASH CABLE(S) TO NEW MESSENGER CABLE	68 NOT USED
4 INSTALL SMFO CABLE	14 INSTALL HIGH DENSITY POLYETHYLENE CONDUIT	25 INSTALL NEW RISER INTO POLE MOUNTED CABINET	35 REMOVE EXISTING CABINET FOUNDATION	46 INSTALL SIDEWALK GUY ASSEMBLY	57 MODIFY EXISTING ELECTRICAL SERVICE	69 HANDLASH AND INSTALL AERIAL CABLE PROTECTOR
5 INSTALL COAXIAL ANTENNA CABLE	15 DIRECTIONAL DRILL CONDUIT	26 INSTALL DIGITAL VIDEO ENCODER	36 INSTALL CCTV CAMERA ASSEMBLY	47 INSTALL MESSENGER CABLE	58 INSTALL NEW ELECTRICAL SERVICE	70 INSTALL EQUIPMENT CABINET DISCONNECT
6 INSTALL FIBER-OPTIC DROP CABLE	16 BORE AND JACK CONDUIT	27 INSTALL NEW ETHERNET EDGE SWITCH IN CABINET	37 INSTALL CCTV CAMERA WOOD POLE	48 REMOVE EXISTING COMMUNICATIONS CABLE AND MESSENGER CABLE	59 INSTALL NEW POLE MOUNTED CCTV CABINET (336)	71 INSTALL MANAGED ETHERNET SWITCH
7 INSTALL TRACER WIRE	17 INSTALL CABLE(S) IN EXISTING CONDUIT	28 INSTALL INTERCONNECT CENTER, PATCH PANEL, JUMPERS, AND FUSION SPLICE CABLE IN CABINET	38 INSTALL STANDARD SIZE JUNCTION BOX	49 REMOVE EXISTING COMMUNICATIONS CABLE	60 INSTALL NEW CCTV CABINET (NEMA TYPE 4)	72 INSTALL CCTV METAL POLE
8 INSTALL CONDUIT UNDERGROUND	18 INSTALL CABLE(S) IN NEW CONDUIT	29 INSTALL UNDERGROUND SPLICE ENCLOSURE	39 INSTALL SPECIAL-SIZED JUNCTION BOX (36" x 24" x 24")	50 INSTALL SERVICE CONDUCTORS	61 REMOVE EXISTING CCTV CAMERA ASSEMBLY	73 REMOVE EXISTING CCTV METAL POLE
9 INSTALL PVC CONDUIT	19 INSTALL CABLE(S) IN EXISTING RISER(S)	30 INSTALL AERIAL SPLICE ENCLOSURE	40 INSTALL OVER-SIZED JUNCTION BOX	51 INSTALL CABLE STORAGE GUIDE(S) (SNOW SHOE(S) AND STORE 100 FEET OF EACH CABLE)	62 NEW CABINET ENTRANCE INTO NEW FOUNDATION	74 REMOVE WIRELESS COMMUNICATIONS EQUIPMENT
10 INSTALL RIGID, GALVANIZED STEEL CONDUIT	20 INSTALL CABLE(S) IN NEW RISER(S)	31 INSTALL TYPE 332 HUB CABINET	41 REMOVE EXISTING JUNCTION BOX	52A INSTALL DELINEATOR MARKER	63 DRILL/CORE DRILL EXISTING FOUNDATION	75 BACKPULL AND COIL NCDOT ITS CABLE
			42 INSTALL WOOD POLE	52B INSTALL JUNCTION BOX MARKER	64 INTERCEPT AND REROUTE EXISTING CONDUITS	76 INSTALL HUB SWITCH
				53 STORE 30' OF COMMUNICATIONS CABLE (EACH CABLE)	65 BOND MESSENGER TO POLE GROUND	77 INSTALL CELLULAR MODEM

ATKINS 1616 EAST MILLBROOK ROAD, SUITE 160 RALEIGH, NORTH CAROLINA 27609 (919) 876-8888 NCBES #F-0326

Prepared for the Offices of:

Fuquay-Varina Signal System Cable Routing Plans

Division 5 Wake County Fuquay-Varina

PLAN DATE: June 2022 REVIEWED BY: MB Toth

PREPARED BY: JT Stiff REVIEWED BY: AM Encarnacion

REVISIONS: _____ INIT. DATE

SCALE: 0 50 1"=50'

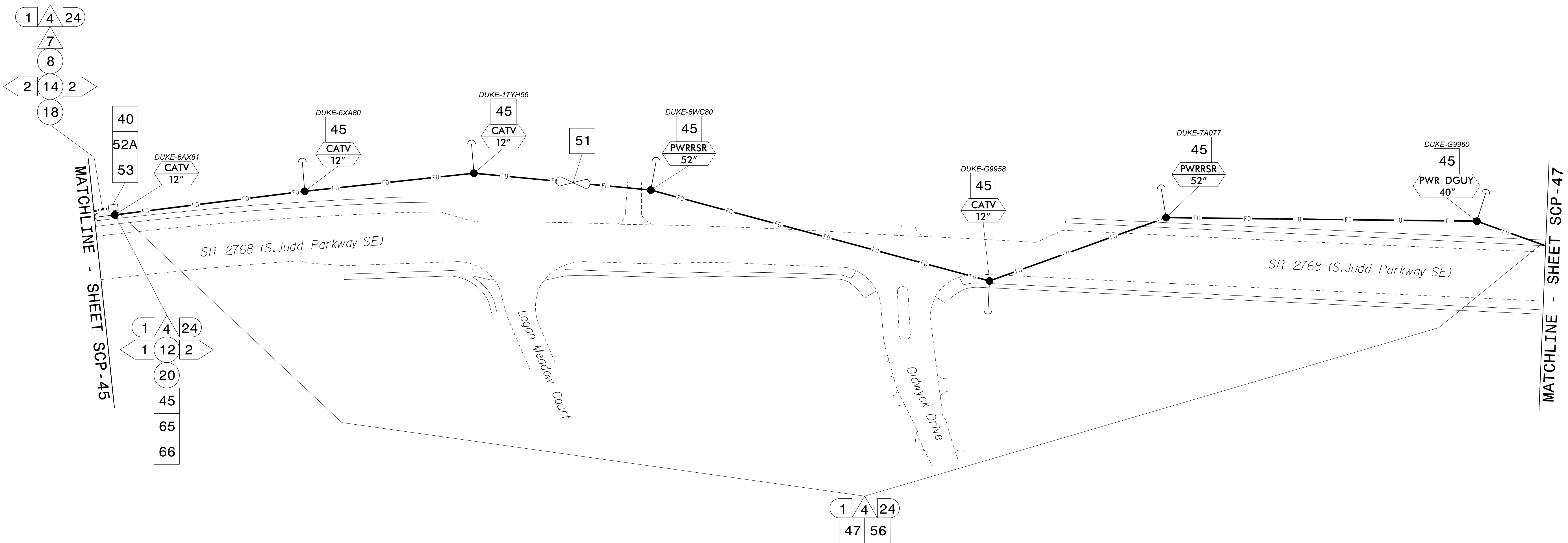
750 Greenfield Parkway, Garner, NC 27529

Prepared by: Anthony Encarnacion DATE: 4/14/2023

CADD File name: CL-40.dgn

DOCUMENT NOT CONSIDERED FINAL UNLESS ALL SIGNATURES COMPLETED

16-MB-2023-16155
 //S:\ED00036353\ortho\is-com\A\K\N\N\01\Documents\Roads and Bridges\Projects\100063268_Fuquay_Var\nc\Task 11_CL\CL-40.dgn
 5/11/2023 AT LUS91089

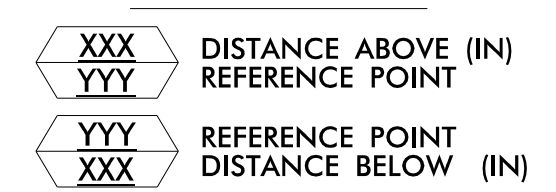


NOTES:

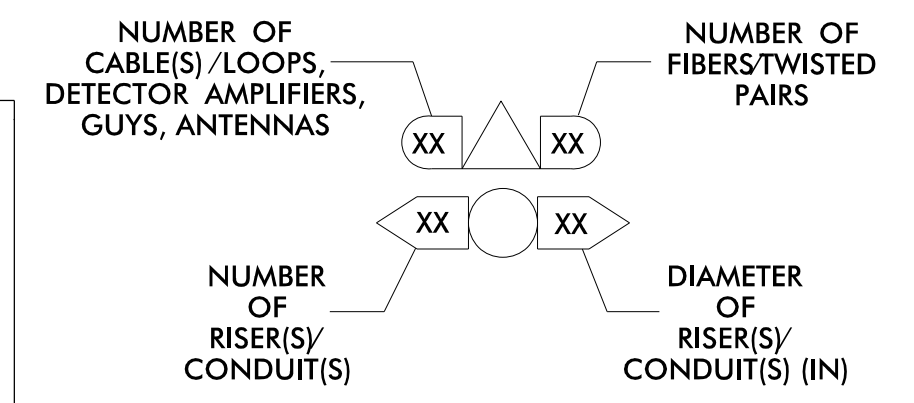
- UNLESS OTHERWISE NOTED:
 - OVERLASH NEW FIBER OPTIC CABLE TO EXISTING COMMUNICATIONS CABLE.
 - ATTACH NEW MESSENGER CABLE 40" BELOW POWER.
 - ATTACH ON FRONT SIDE (FS) OF POLE.
- SEAL ALL CONDUIT ENDS WITH DUCT AND CONDUIT SEALER AT ALL JUNCTION BOX / CABINET ENTRANCES.

1	INSTALL CATEGORY 6 CABLE	11	INSTALL RIGID, GALVANIZED STEEL RISER WITH WEATHERHEAD	22	INSTALL NEW CONDUIT INTO CABINET BASE (USE EX CABINET ENTRANCE WHEN AVAILABLE)	32	MODIFY EXISTING SPLICE ENCLOSURE OR INTERCONNECT CENTER	43	REMOVE EXISTING WOOD POLE	54	LASH CABLE(S) TO EXISTING SIGNAL/COMMUNICATIONS CABLE	66	BOND RISER TO POLE GROUND
2	INSTALL 3-WIRE COPPER SERVICE ENTRANCE CONDUCTORS	12	INSTALL RIGID, GALVANIZED STEEL RISER WITH HEAT SHRINK TUBING	23	INSTALL NEW RISER INTO CABINET BASE (USE EX CABINET ENTRANCE WHEN AVAILABLE)	33	REMOVE EXISTING SPLICE / HUB / CCTV CABINET	44	INSTALL AERIAL GUY ASSEMBLY	55	LASH CABLE(S) TO EXISTING MESSENGER CABLE	67	BOND TRACER WIRE TO EQUIPMENT GROUND BUS
3	INSTALL 3-WIRE COPPER FEEDER CONDUCTORS	13	INSTALL HEAT SHRINK TUBING RETROFIT KIT	24	INSTALL NEW CONDUIT INTO POLE MOUNTED CABINET	34	INSTALL CABINET FOUNDATION	45	INSTALL STANDARD GUY ASSEMBLY	56	LASH CABLE(S) TO NEW MESSENGER CABLE	68	NOT USED
4	INSTALL SMFO CABLE	14	INSTALL HIGH DENSITY POLYETHYLENE CONDUIT	25	INSTALL NEW RISER INTO POLE MOUNTED CABINET	35	REMOVE EXISTING CABINET FOUNDATION	46	INSTALL SIDEWALK GUY ASSEMBLY	57	MODIFY EXISTING ELECTRICAL SERVICE	69	HANDLASH AND INSTALL AERIAL CABLE PROTECTOR
5	INSTALL COAXIAL ANTENNA CABLE	15	DIRECTIONAL DRILL CONDUIT	26	INSTALL DIGITAL VIDEO ENCODER	36	INSTALL CCTV CAMERA ASSEMBLY	47	INSTALL MESSENGER CABLE	58	INSTALL NEW ELECTRICAL SERVICE	70	INSTALL EQUIPMENT CABINET DISCONNECT
6	INSTALL FIBER-OPTIC DROP CABLE	16	BORE AND JACK CONDUIT	27	INSTALL NEW ETHERNET EDGE SWITCH IN CABINET	37	INSTALL CCTV CAMERA WOOD POLE	48	REMOVE EXISTING COMMUNICATIONS CABLE AND MESSENGER CABLE	59	INSTALL NEW POLE MOUNTED CCTV CABINET (336)	71	INSTALL MANAGED ETHERNET SWITCH
7	INSTALL TRACER WIRE	17	INSTALL CABLE(S) IN EXISTING CONDUIT	28	INSTALL INTERCONNECT CENTER, PATCH PANEL, JUMPERS, AND FUSION SPLICE CABLE IN CABINET	38	INSTALL STANDARD SIZE JUNCTION BOX	49	REMOVE EXISTING COMMUNICATIONS CABLE	60	INSTALL NEW CCTV CABINET (NEMA TYPE 4)	72	INSTALL CCTV METAL POLE
8	INSTALL CONDUIT UNDERGROUND	18	INSTALL CABLE(S) IN NEW CONDUIT	29	INSTALL UNDERGROUND SPLICE ENCLOSURE	39	INSTALL SPECIAL-SIZED JUNCTION BOX (36" x 24" x 24")	50	INSTALL SERVICE CONDUCTORS	61	REMOVE EXISTING CCTV CAMERA ASSEMBLY	73	REMOVE EXISTING CCTV METAL POLE
9	INSTALL PVC CONDUIT	19	INSTALL CABLE(S) IN EXISTING RISER(S)	30	INSTALL AERIAL SPLICE ENCLOSURE	40	INSTALL OVER-SIZED JUNCTION BOX	51	INSTALL CABLE STORAGE GUIDE(S) (SNOW SHOE(S) AND STORE 100 FEET OF EACH CABLE)	62	NEW CABINET ENTRANCE INTO NEW FOUNDATION	74	REMOVE WIRELESS COMMUNICATIONS EQUIPMENT
10	INSTALL RIGID, GALVANIZED STEEL CONDUIT	20	INSTALL CABLE(S) IN NEW RISER(S)	31	INSTALL TYPE 332 HUB CABINET	41	REMOVE EXISTING JUNCTION BOX	52A	INSTALL DELINEATOR MARKER	63	DRILL/CORE DRILL EXISTING FOUNDATION	75	BACKPULL AND COIL NCDOT ITS CABLE
						42	INSTALL WOOD POLE	52B	INSTALL JUNCTION BOX MARKER	64	INTERCEPT AND REROUTE EXISTING CONDUITS	76	INSTALL HUB SWITCH
								53	STORE 30' OF COMMUNICATIONS CABLE (EACH CABLE)	65	BOND MESSENGER TO POLE GROUND	77	INSTALL CELLULAR MODEM

ATTACHMENT POINT:



CONSTRUCTION NOTE SYMBOLOGY KEY



ATKINS 1616 EAST MILLBROOK ROAD, SUITE 160
 RALEIGH, NORTH CAROLINA 27609
 (919) 876-8888 NGBEES #F-0326

DOCUMENT NOT CONSIDERED FINAL UNLESS ALL SIGNATURES COMPLETED

Prepared for the Offices of:

Fuquay-Varina Signal System Cable Routing Plans

Division 5 Wake County Fuquay-Varina

PLAN DATE: June 2022 REVIEWED BY: MB Toth

PREPARED BY: JT Stiff REVIEWED BY: AM Encarnacion

REVISIONS: _____ INIT. DATE

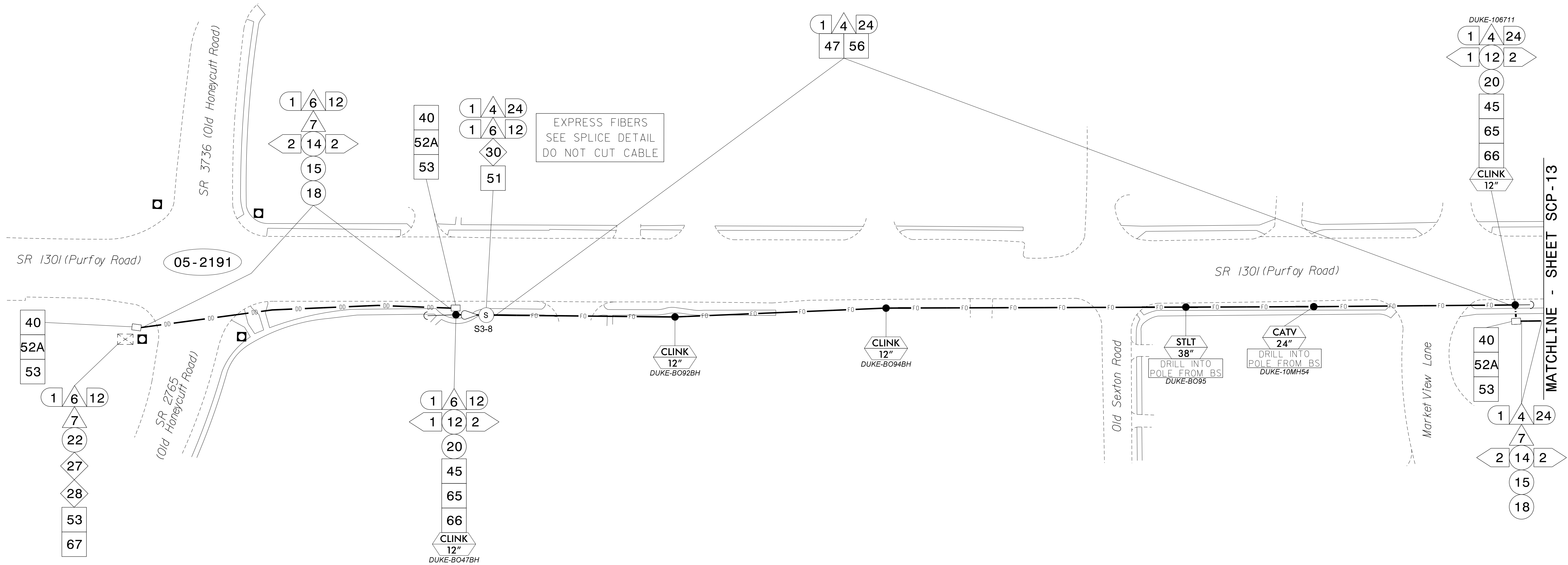
SCALE: 0 50
1"=50'

Seal: NORTH CAROLINA PROFESSIONAL ENGINEER SEAL 044476

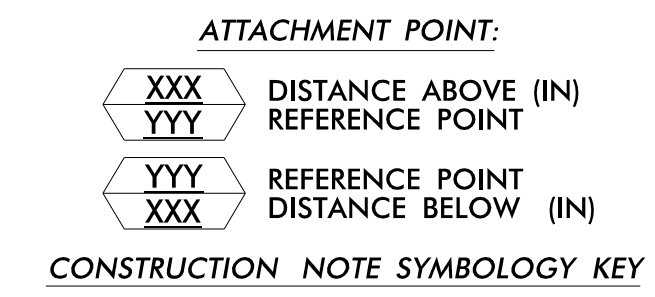
Signature: Anthony Encarnacion 4/14/2023

CADD File Name: CL-41.dgn

16-MB-2023-16155
S:\Projects\2023\16155\16155-003\16155-003-001\16155-003-001.dwg
S:\Projects\2023\16155\16155-003\16155-003-001\16155-003-001.dwg
S:\Projects\2023\16155\16155-003\16155-003-001\16155-003-001.dwg



- NOTES:**
- UNLESS OTHERWISE NOTED:
 - OVERLASH NEW FIBER OPTIC CABLE TO EXISTING COMMUNICATIONS CABLE.
 - ATTACH NEW MESSENGER CABLE 40" BELOW POWER.
 - ATTACH ON FRONT SIDE (FS) OF POLE.
 - SEAL ALL CONDUIT ENDS WITH DUCT AND CONDUIT SEALER AT ALL JUNCTION BOX / CABINET ENTRANCES.



1	INSTALL CATEGORY 6 CABLE	11	INSTALL RIGID, GALVANIZED STEEL RISER WITH WEATHERHEAD	22	INSTALL NEW CONDUIT INTO CABINET BASE (USE EX CABINET ENTRANCE WHEN AVAILABLE)	32	MODIFY EXISTING SPLICE ENCLOSURE OR INTERCONNECT CENTER	43	REMOVE EXISTING WOOD POLE	54	LASH CABLE(S) TO EXISTING SIGNAL/COMMUNICATIONS CABLE	66	BOND RISER TO POLE GROUND
2	INSTALL 3-WIRE COPPER SERVICE ENTRANCE CONDUCTORS	12	INSTALL RIGID, GALVANIZED STEEL RISER WITH HEAT SHRINK TUBING	23	INSTALL NEW RISER INTO CABINET BASE (USE EX CABINET ENTRANCE WHEN AVAILABLE)	33	REMOVE EXISTING SPLICE /HUB / CCTV CABINET	44	INSTALL AERIAL GUY ASSEMBLY	55	LASH CABLE(S) TO EXISTING MESSENGER CABLE	67	BOND TRACER WIRE TO EQUIPMENT GROUND BUS
3	INSTALL 3-WIRE COPPER FEEDER CONDUCTORS	13	INSTALL HEAT SHRINK TUBING RETROFIT KIT	24	INSTALL NEW CONDUIT INTO POLE MOUNTED CABINET	34	INSTALL CABINET FOUNDATION	45	INSTALL STANDARD GUY ASSEMBLY	56	LASH CABLE(S) TO NEW MESSENGER CABLE	68	NOT USED
4	INSTALL SMFO CABLE	14	INSTALL HIGH DENSITY POLYETHYLENE CONDUIT	25	INSTALL NEW RISER INTO POLE MOUNTED CABINET	35	REMOVE EXISTING CABINET FOUNDATION	46	INSTALL SIDEWALK GUY ASSEMBLY	57	MODIFY EXISTING ELECTRICAL SERVICE	69	HANDLASH AND INSTALL AERIAL CABLE PROTECTOR
5	INSTALL COAXIAL ANTENNA CABLE	15	DIRECTIONAL DRILL CONDUIT	26	INSTALL DIGITAL VIDEO ENCODER	36	INSTALL CCTV CAMERA ASSEMBLY	47	INSTALL MESSENGER CABLE	58	INSTALL NEW ELECTRICAL SERVICE	70	INSTALL EQUIPMENT CABINET DISCONNECT
6	INSTALL FIBER-OPTIC DROP CABLE	16	BORE AND JACK CONDUIT	27	INSTALL NEW ETHERNET EDGE SWITCH IN CABINET	37	INSTALL CCTV CAMERA WOOD POLE	48	REMOVE EXISTING COMMUNICATIONS CABLE AND MESSENGER CABLE	59	INSTALL NEW POLE MOUNTED CCTV CABINET (336)	71	INSTALL MANAGED ETHERNET SWITCH
7	INSTALL TRACER WIRE	17	INSTALL CABLE(S) IN EXISTING CONDUIT	28	INSTALL INTERCONNECT CENTER, PATCH PANEL, JUMPERS, AND FUSION SPLICE CABLE IN CABINET	38	INSTALL STANDARD SIZE JUNCTION BOX	49	REMOVE EXISTING COMMUNICATIONS CABLE	60	INSTALL NEW CCTV CABINET (NEMA TYPE 4)	72	INSTALL CCTV METAL POLE
8	INSTALL CONDUIT UNDERGROUND	18	INSTALL CABLE(S) IN NEW CONDUIT	29	INSTALL UNDERGROUND SPLICE ENCLOSURE	39	INSTALL SPECIAL-SIZED JUNCTION BOX (36" x 24" x 24")	50	INSTALL SERVICE CONDUCTORS	61	REMOVE EXISTING CCTV CAMERA ASSEMBLY	73	REMOVE EXISTING CCTV METAL POLE
9	INSTALL PVC CONDUIT	19	INSTALL CABLE(S) IN EXISTING RISER(S)	30	INSTALL AERIAL SPLICE ENCLOSURE	40	INSTALL OVER-SIZED JUNCTION BOX	51	INSTALL CABLE STORAGE GUIDE(S) (SNOW SHOE(S) AND STORE 100 FEET OF EACH CABLE)	62	NEW CABINET ENTRANCE INTO NEW FOUNDATION	74	REMOVE WIRELESS COMMUNICATIONS EQUIPMENT
10	INSTALL RIGID, GALVANIZED STEEL CONDUIT	20	INSTALL CABLE(S) IN NEW RISER(S)	31	INSTALL TYPE 332 HUB CABINET	41	REMOVE EXISTING JUNCTION BOX	52A	INSTALL DELINEATOR MARKER	63	DRILL/CORE DRILL EXISTING FOUNDATION	75	BACKPULL AND COIL NCDOT ITS CABLE
						42	INSTALL WOOD POLE	52B	INSTALL JUNCTION BOX MARKER	64	INTERCEPT AND REROUTE EXISTING CONDUITS	76	INSTALL HUB SWITCH
								53	STORE 30' OF COMMUNICATIONS CABLE (EACH CABLE)	65	BOND MESSENGER TO POLE GROUND	77	INSTALL CELLULAR MODEM

ATKINS 1616 EAST MILLBROOK ROAD, SUITE 160
RALEIGH, NORTH CAROLINA 27609
(919) 876-8888 NCBES #F-0326

DOCUMENT NOT CONSIDERED FINAL UNLESS ALL SIGNATURES COMPLETED

Prepared for the Offices of:

Fuquay-Varina Signal System Cable Routing Plans

Division 5 Wake County Fuquay-Varina

PLAN DATE: June 2022	REVIEWED BY: MB Toth
PREPARED BY: JT Stiff	REVIEWED BY: AM Encarnacion

REVISIONS: INIT. DATE

SCALE: 0 50
1"=50'

Seal:

CADD File Name: CL-45.dgn

16-MB-2023-16156
 S:\Projects\2023\16156\Drawings\Roads and Bridges\Projects\100063268 Fuquay Varina\Task 11_CL/CL-45.dgn
 5/11/2023 AT LUS91089

MATCHLINE - SHEET SCP-13

